

OFFICE SPACE FOR LEASE

2701
maitland center
parkway

2701 MAITLAND CENTER
2701 Maitland Center Parkway
Maitland, FL 32751

2701 Maitland Center is a multi-story office building located in the Maitland Center Office Park. It sits across from the RDV Sportsplex and close to many business hotels and local restaurants.

NEW Building & Lobby Renovations

**PROFESSIONAL
OFFICE SUITES**

8,130 RSF

5% BROKERAGE FEE

Rent Concessions Available*



For more information, contact:

Tiffany Zullo

(407) 659.0120 x114 | TZullo@trpre.com

www.trpre.com



SPACE AVAILABLE

Suite	RSF
200	8,130 (Avail Aug/Sept 24)

\$21.50 - \$22.00 / RSF - Full Service
 *Rent Concessions for Credit Tenant

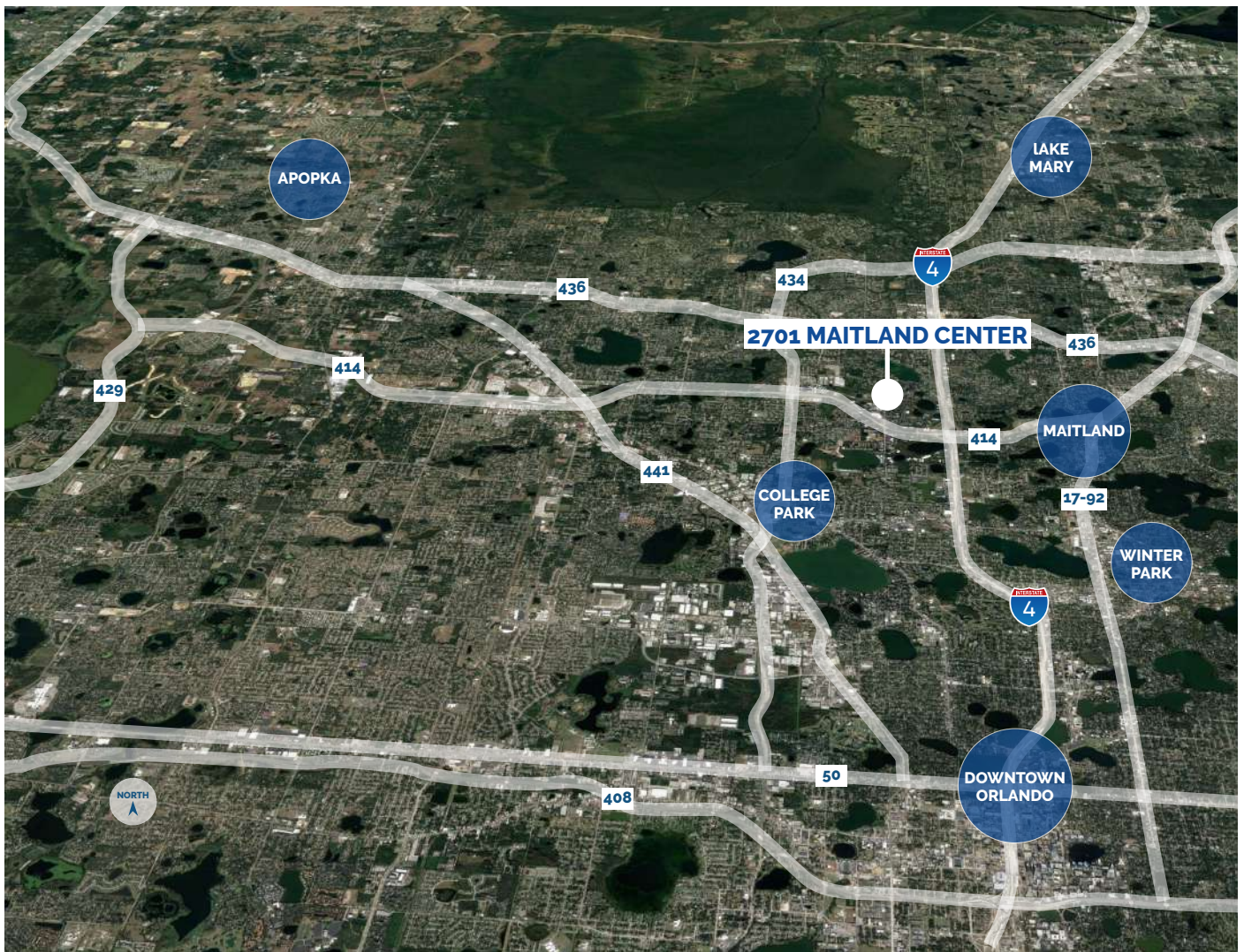
BUILDING FEATURES & AMENITIES

- ▶ **TOTAL Building & Lobby Renovations**
- ▶ Building Signage Available
- ▶ Outdoor Patio / Workspace
- ▶ Fiber: Century Link / Cable: Spectrum
- ▶ 4/1000 Parking Ratio
- ▶ **Excellent Maitland Center Location**
- ▶ Easy I-4 Access / Minutes to Downtown
- ▶ Adjacent to Orlando Ice Den & Lynx Bus Stop



For more information, contact:
Tiffany Zullo
 (407) 659.0120 x114 | TZullo@trpcrc.com
www.trpcrc.com





LOCATION HIGHLIGHTS

- ▶ Well-positioned within Maitland Center Office Park, one of Orlando's largest office submarkets
- ▶ Conveniently less than a half mile from I-4 & providing easy access to Downtown Orlando
- ▶ Close to business hotels, restaurants, retail and the RDV Sportsplex
- ▶ Ideally located in Central Florida's top executive housing market & the following established neighborhoods
 - Maitland: 3-Miles
 - Winter Park: 5-Miles
 - College Park: 7-Miles
 - Downtown: 8-Miles
 - Lake Mary: 12-Miles

For more information, contact:

Tiffany Zullo

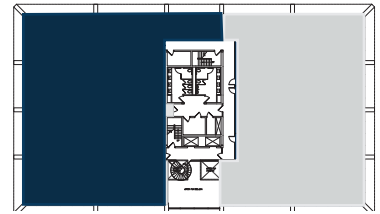
(407) 659.0120 x114 | TZullo@trpcre.com

www.trpcre.com

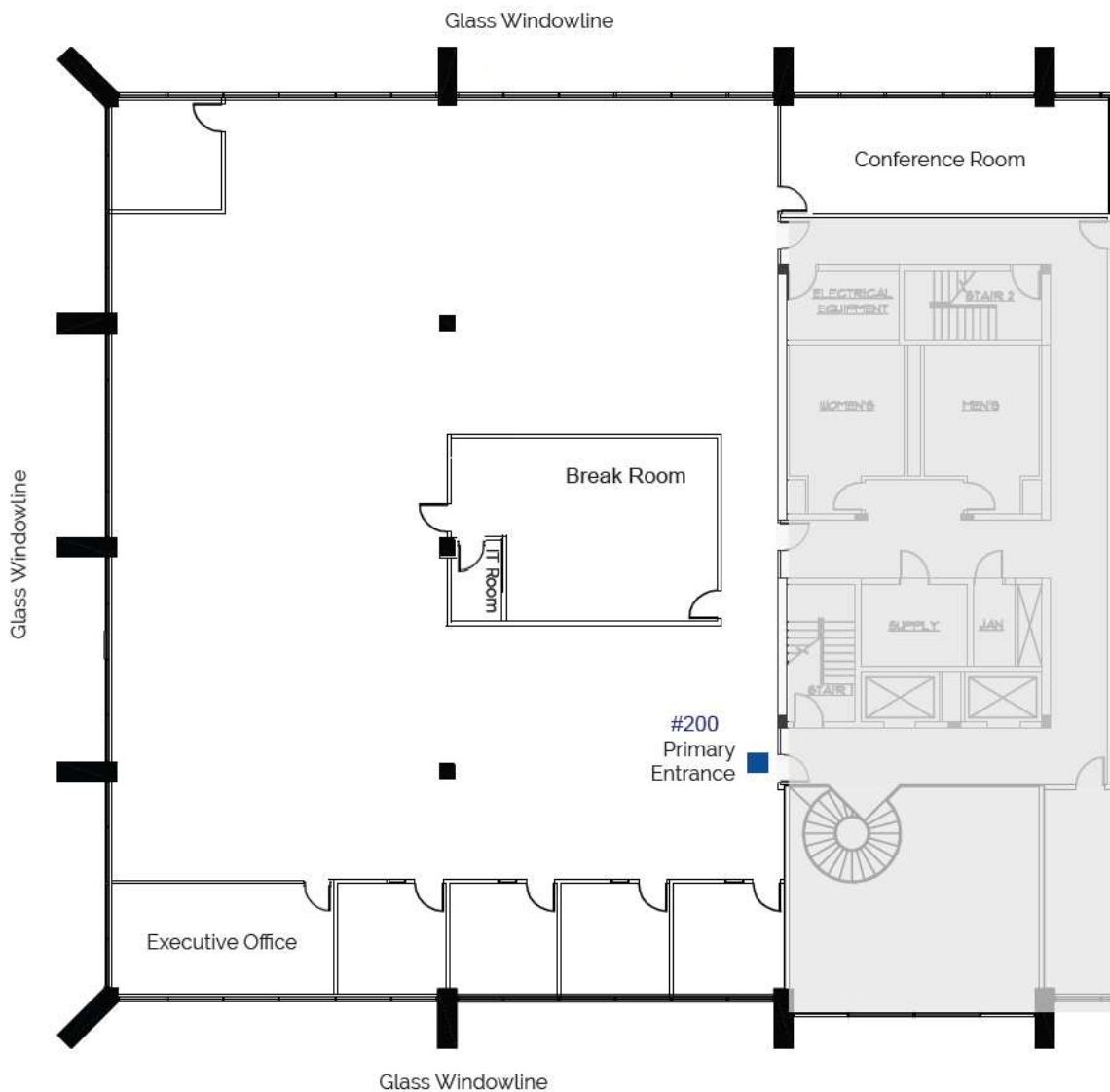
2701
maitland center
parkway

2nd
Floor

Suite 200: 8,130RSF



Available Aug/Sept 2024



For more information, contact:

Tiffany Zullo

(407) 659.0120 x114 | TZullo@trpcre.com

www.trpcre.com