

# OFFICE SPACE FOR LEASE



**2701 MAITLAND CENTER**  
2701 Maitland Center Parkway  
Maitland, FL 32751

2701 Maitland Center is a multi-story office building located in the Maitland Center Office Park. It sits across from the RDV Sportsplex and close to many business hotels and local restaurants.

**Building & Lobby Renovations  
Delivering September 2022**

**PROFESSIONAL  
OFFICE SUITES**

**2,987-7,981 RSF**

**Rent Concessions Available\***



For more information, contact:

**Tiffany Zullo**  
(407) 659.0120 x114 | TZullo@trpcre.com

[www.trpcre.com](http://www.trpcre.com)

## SPACE AVAILABLE

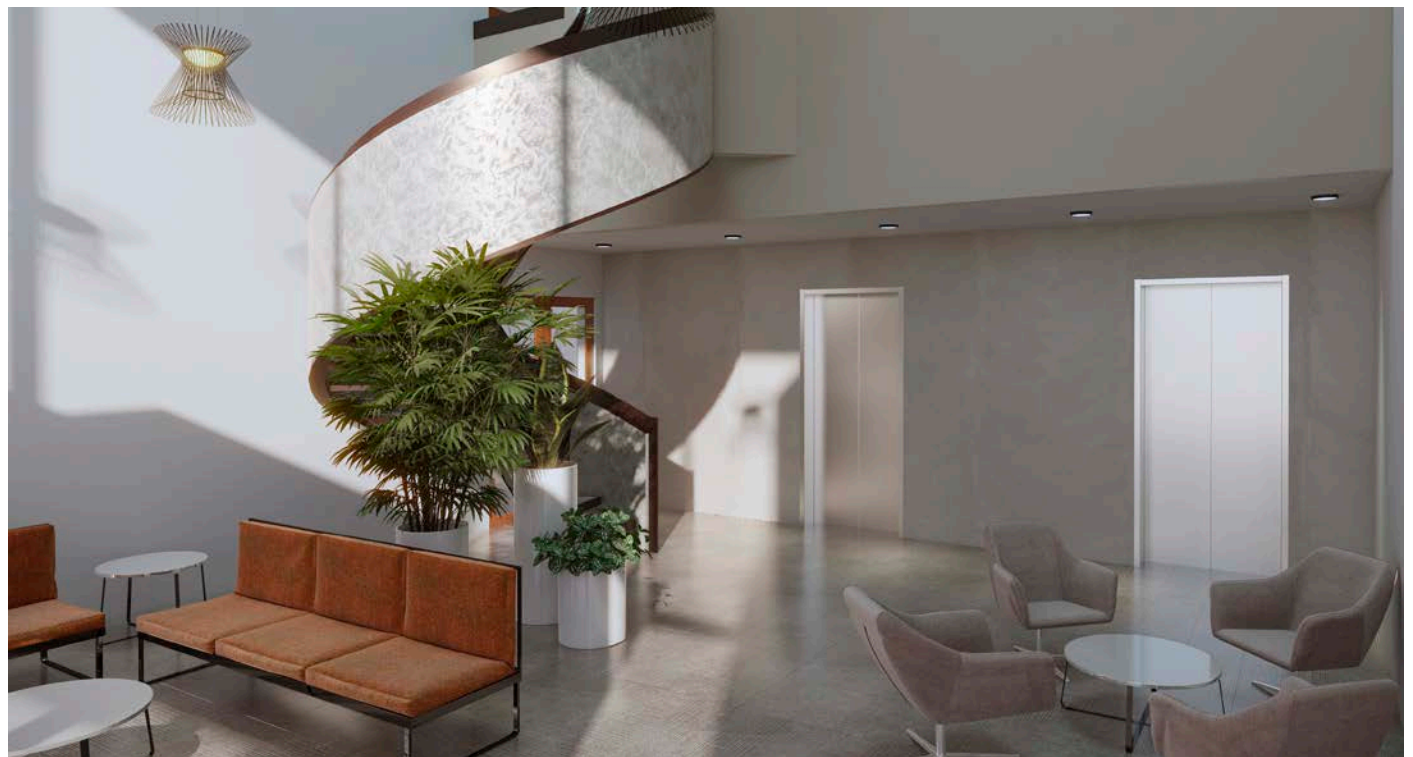
Suite	RSF
125	7,981 Avail. 11/2022
225 Move-in Ready	2,987 Avail. 9/2022
250 Demisable	4,725

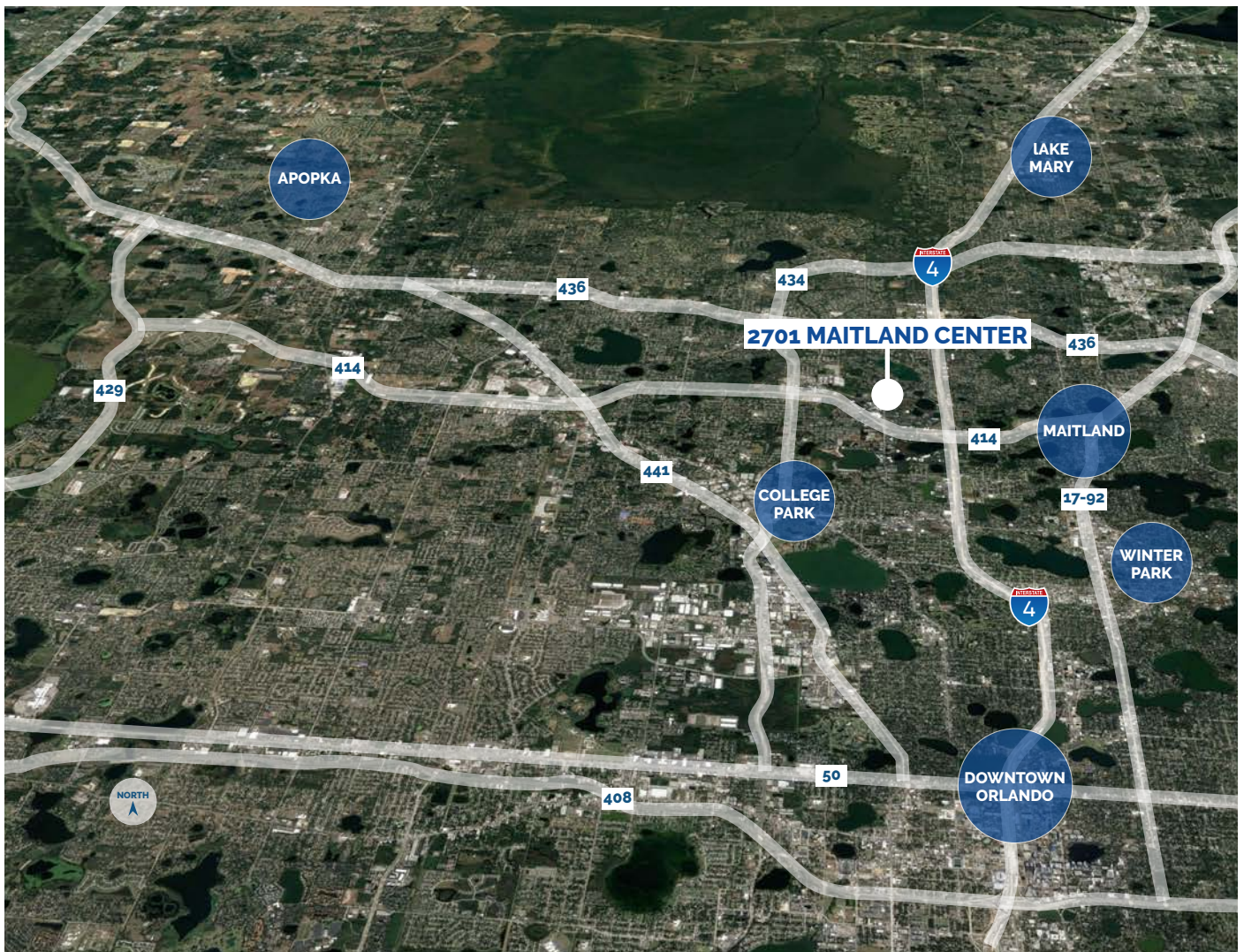
\$21.50 / RSF - Full Service  
 \*Rent Concessions for Credit Tenant



## BUILDING FEATURES & AMENITIES

- ▶ **TOTAL Building & Lobby Renovations Underway**
- ▶ Monument Signage Available
- ▶ Fiber: Century Link / Cable: Spectrum
- ▶ 4/1000 Parking Ratio
- ▶ Excellent Maitland Center Location
- ▶ Easy I-4 Access / Minutes to Downtown
- ▶ Adjacent to RDV Sportsplex & Lynx Bus Stop





## LOCATION HIGHLIGHTS

- ▶ Well-positioned within Maitland Center Office Park, one of Orlando's largest office submarkets
- ▶ Conveniently less than a half mile from I-4 & providing easy access to Downtown Orlando
- ▶ Close to business hotels, restaurants, retail and the RDV Sportsplex
- ▶ Ideally located in Central Florida's top executive housing market & the following established neighborhoods
  - Maitland: 3-Miles
  - Winter Park: 5-Miles
  - College Park: 7-Miles
  - Downtown: 8-Miles
  - Lake Mary: 12-Miles

For more information, contact:

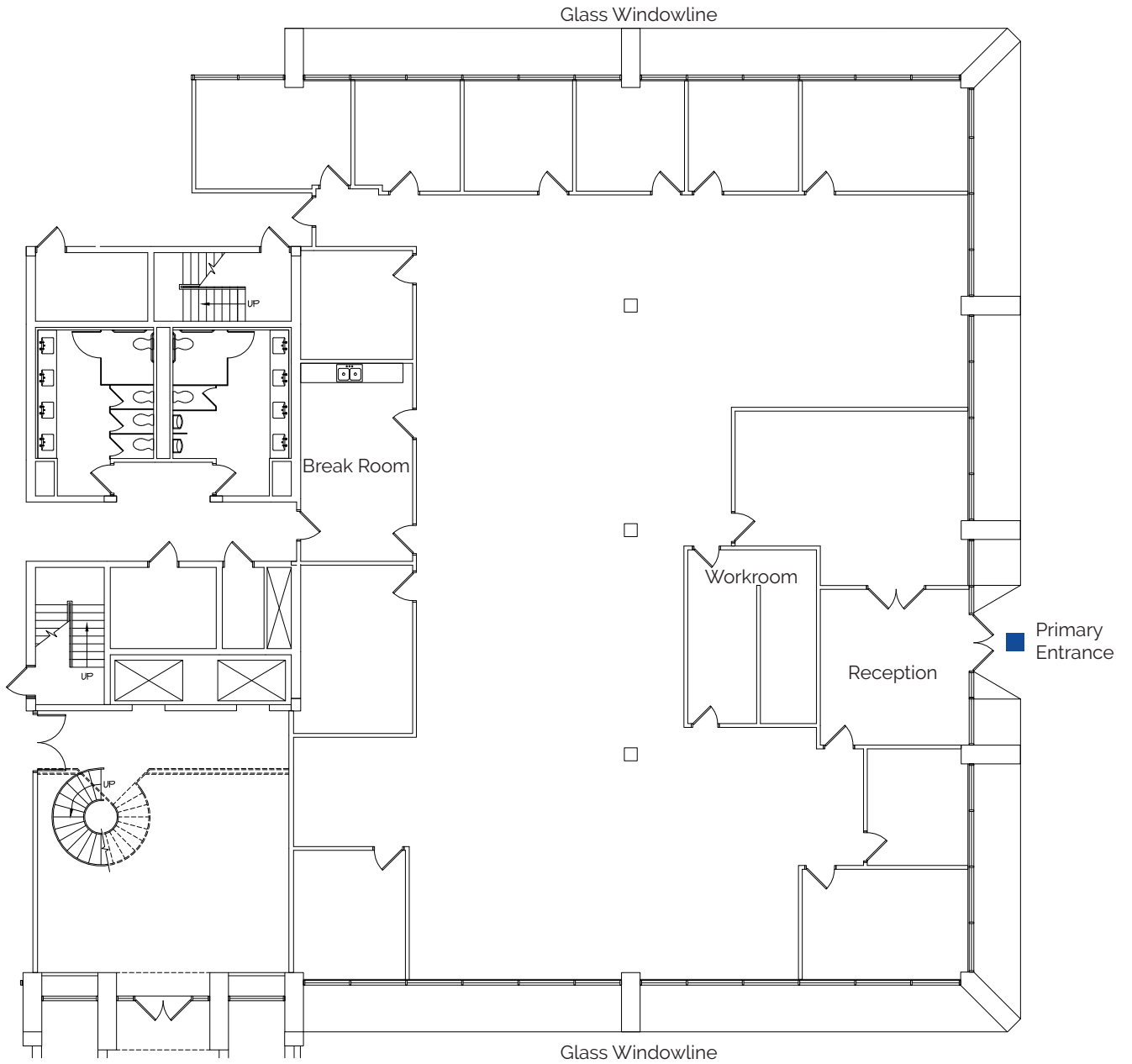
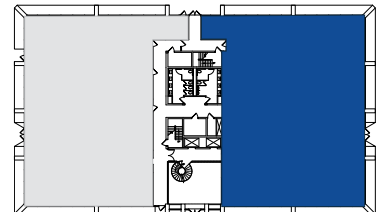
**Tiffany Zullo**  
 (407) 659.0120 x114 | TZullo@trpcre.com

[www.trpcre.com](http://www.trpcre.com)

1st  
Floor

Suite 125: 7,981 RSF

Available 11/2022



For more information, contact:

**Tiffany Zullo**

(407) 659.0120 x114 | TZullo@trpcre.com

[www.trpcre.com](http://www.trpcre.com)

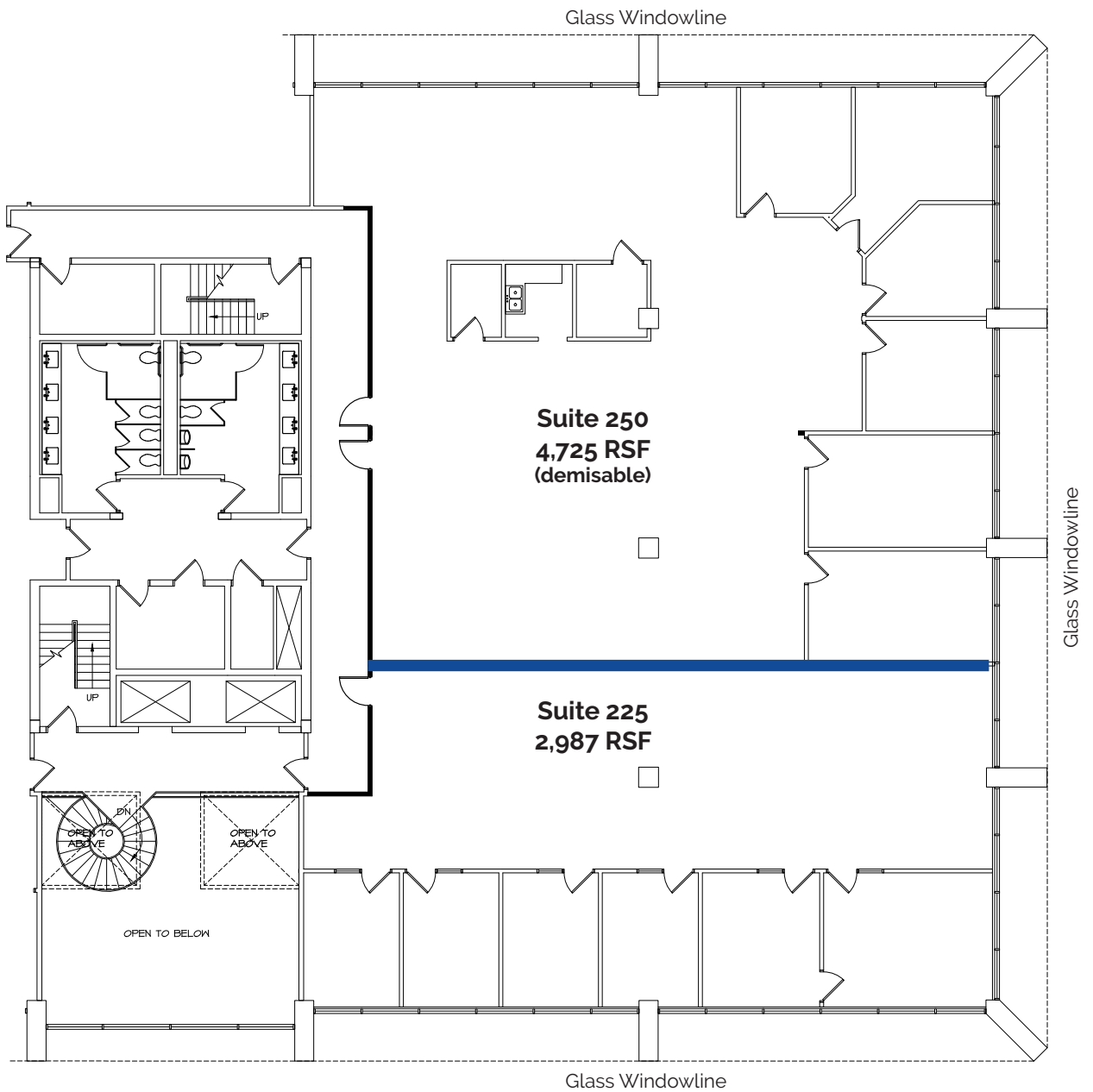
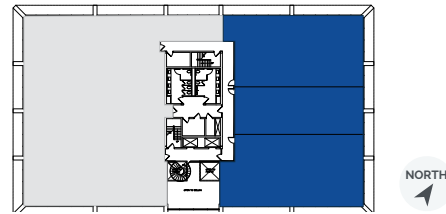
2nd  
Floor

Suite 225: 2,987 RSF

Suite 250: 4,725 RSF

Available 9/2022  
(move-in ready)

Demisable



For more information, contact:

**Tiffany Zullo**

(407) 659.0120 x114 | TZullo@trpcre.com

[www.trpcre.com](http://www.trpcre.com)