

OFFICE SPACE

For Lease



555 WINDERLEY

555 Winderley Place
Maitland, FL 32751

555 Winderley is a multi-story office building featuring a newly renovated lobby, beautiful atrium, a tenant lounge equipped with complementary WiFi and vending cafe.

**NEWLY
RENOVATED**

**RSF AVAILABLE
2,455-9,969**



For more information, contact:

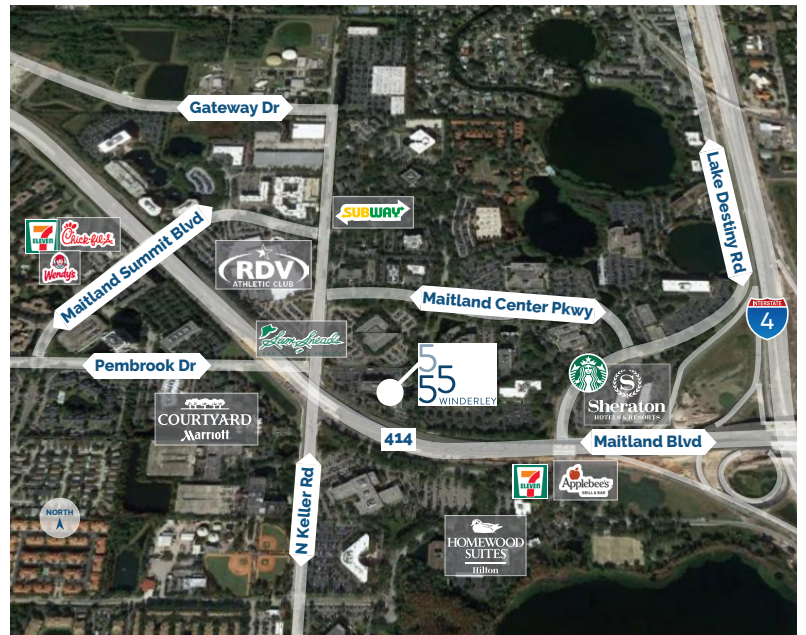
Tiffany Zullo
(407) 659.0120 x114 | TZullo@trpcre.com

www.trpcre.com

SPACE AVAILABLE

Suite	RSF
120*	2,455 (Click for Virtual Tour)
220	3,425 (Available 8/1/24)
400	9,969 (Available 2/1/25)

CONCESSIONS & IMPROVEMENTS NEGOTIABLE



BUILDING FEATURES & AMENITIES

- ▶ Renovated Lobby, Corridor & Restrooms
- ▶ New Tenant Lounge Offering Free WiFi
- ▶ Beautiful 4-Story Atrium + Water Views
- ▶ Vending Cafe
- ▶ Telcom - (Cable/Fiber) Spectrum, Century Link & Crown Castle
- ▶ 24 Hour Building Access
- ▶ 2019 Energy Star Certified
- ▶ Fronting Maitland Blvd. & Across from RDV Sportsplex & Sam Sneads
- ▶ 4/1000 Parking Ratio
- ▶ Electric Car Charging Station



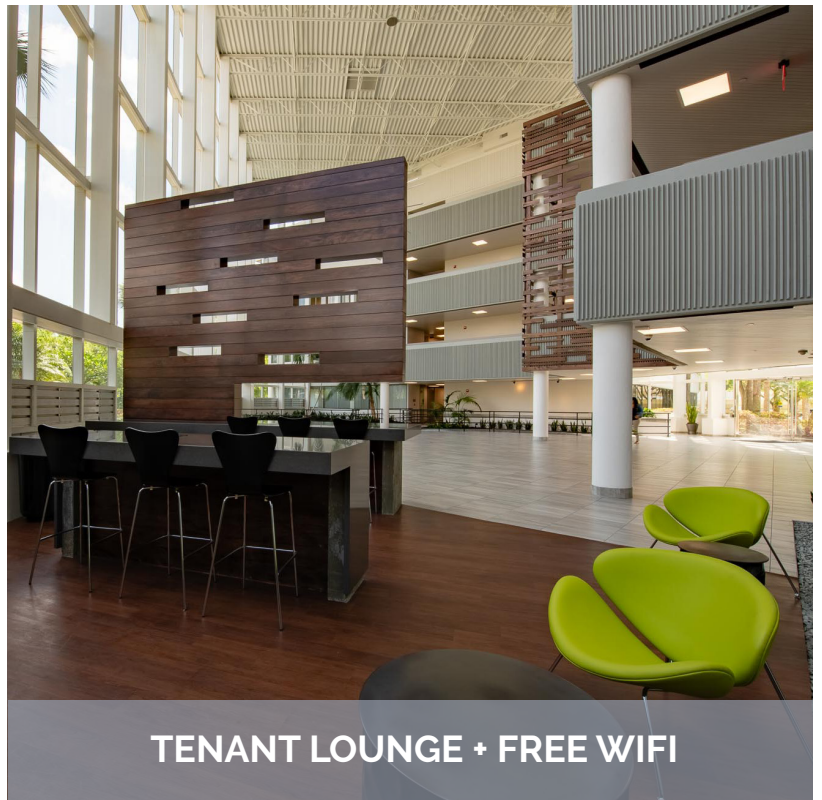
For more information, contact:

Tiffany Zullo
 (407) 659.0120 x114 | TZullo@trpcre.com

www.trpcre.com



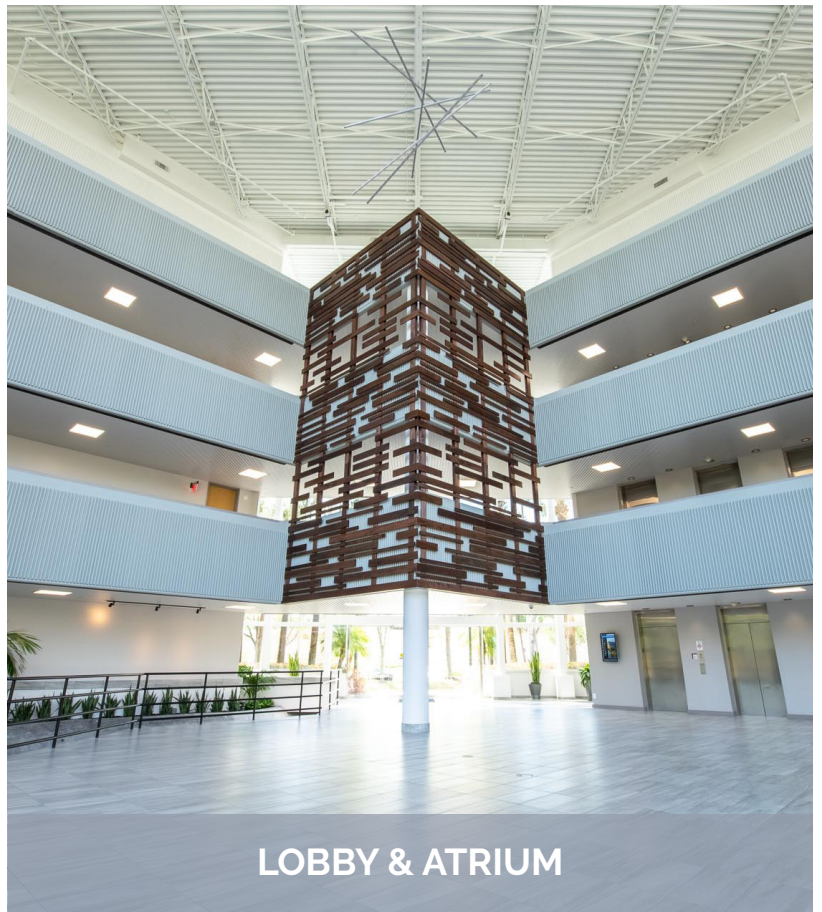
VENDING CAFE



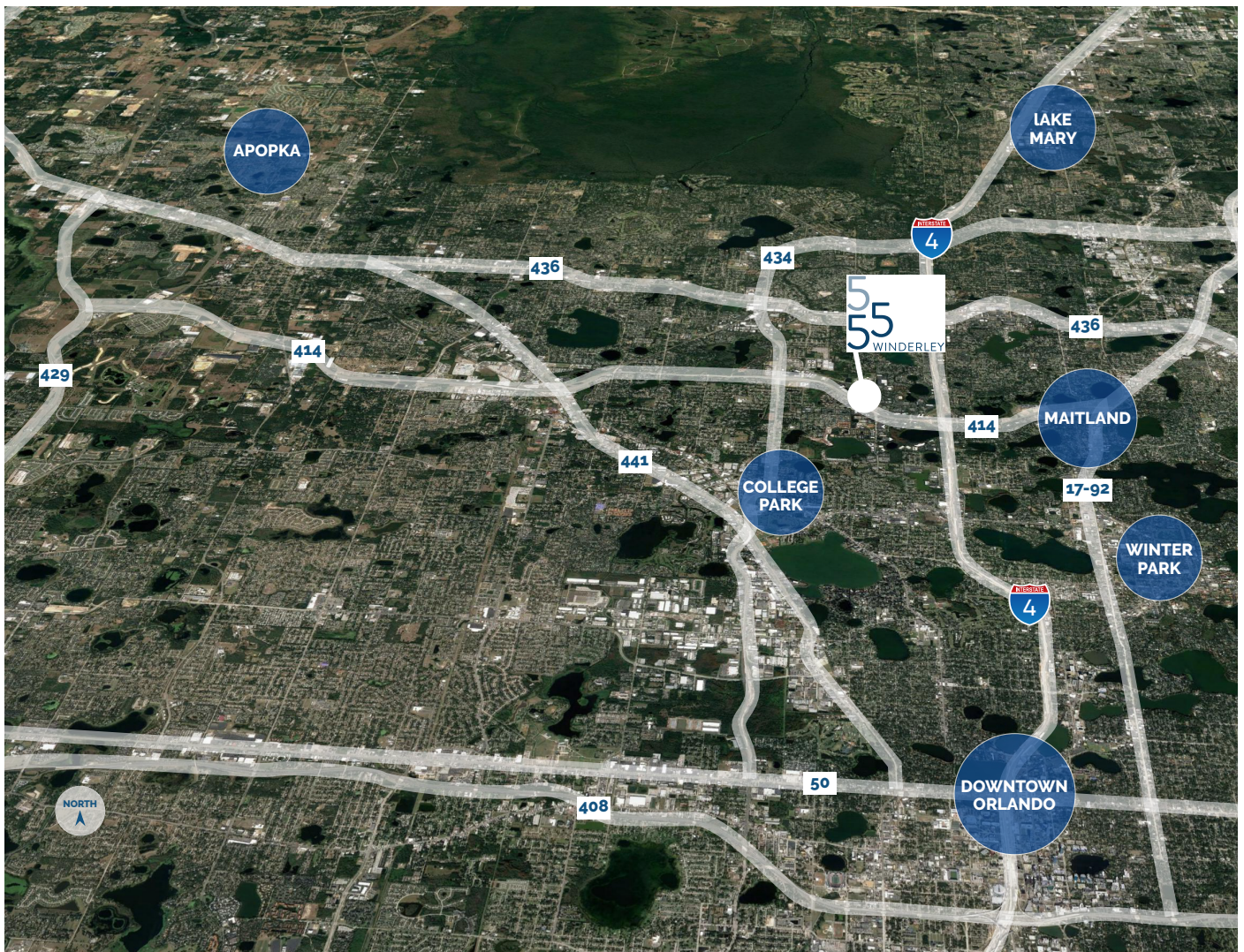
TENANT LOUNGE + FREE WIFI



NEWLY RENOVATED
Lobby, Corridors & Restrooms



LOBBY & ATRIUM



LOCATION HIGHLIGHTS

- ▶ Well-positioned within Maitland Center Office Park, one of Orlando's largest office submarkets
- ▶ Conveniently less than a half mile from I-4 & providing easy access to Downtown Orlando
- ▶ Close to business hotels, restaurants, retail and the RDV Sportsplex
- ▶ Ideally located in Central Florida's top executive housing market & the following established neighborhoods
 - Maitland: 3-Miles
 - Winter Park: 5-Miles
 - College Park: 7-Miles
 - Downtown: 8-Miles
 - Lake Mary: 12-Miles

For more information, contact:

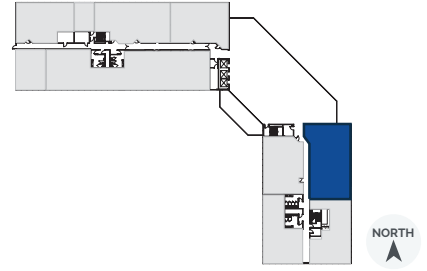
Tiffany Zullo
 (407) 659.0120 x114 | TZullo@trpcre.com

www.trpcre.com

- AS-IS Prime Suite Off Lobby
- CAT-5 Low Voltage In Place

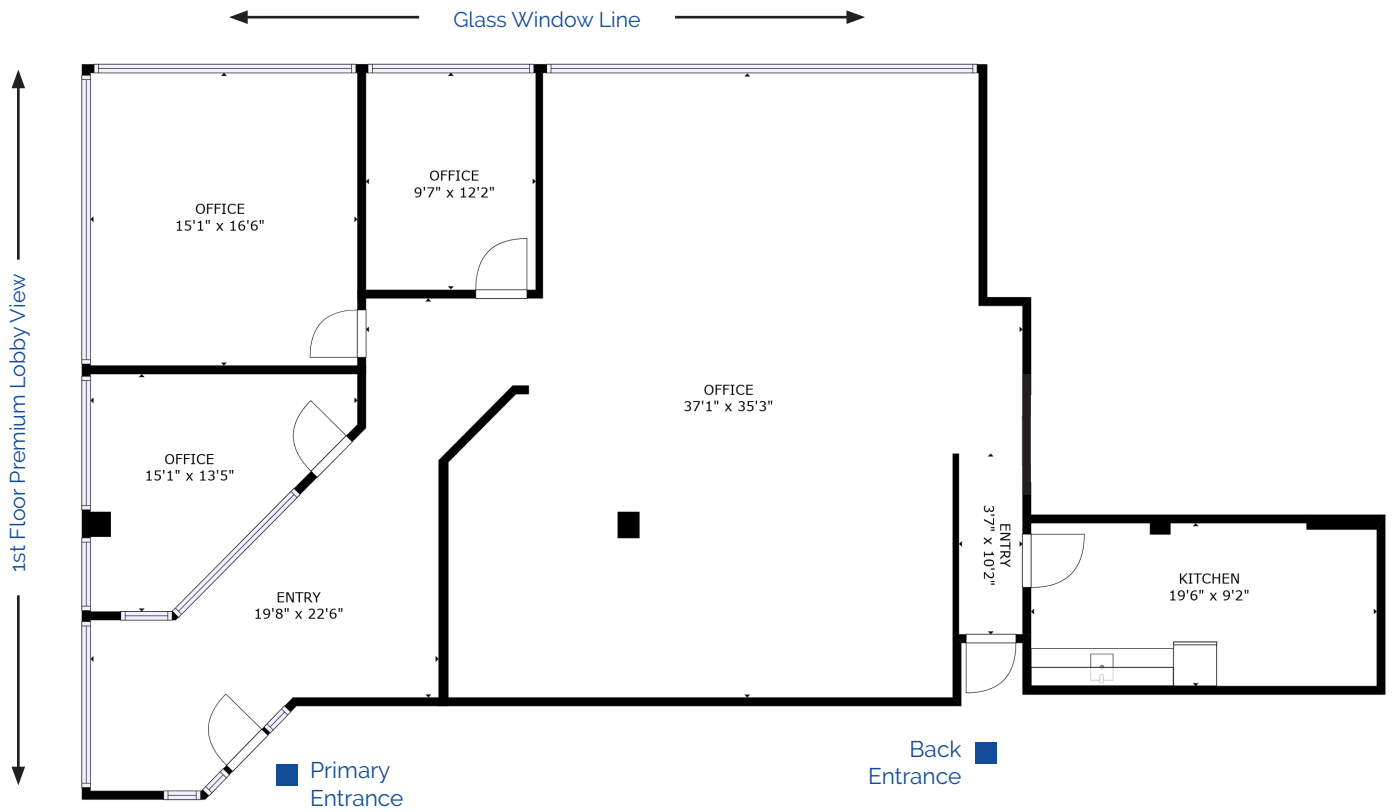
1st Floor

Suite 120*: 2,455 RSF



[Click Here For Virtual Tour](#)

***Space Offered - AS-IS**
(With Generous Rent Concessions)



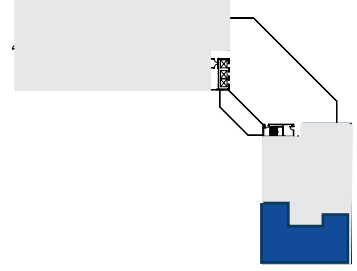
For more information, contact:

Tiffany Zullo
(407) 659.0120 x114 | TZullo@trpcre.com

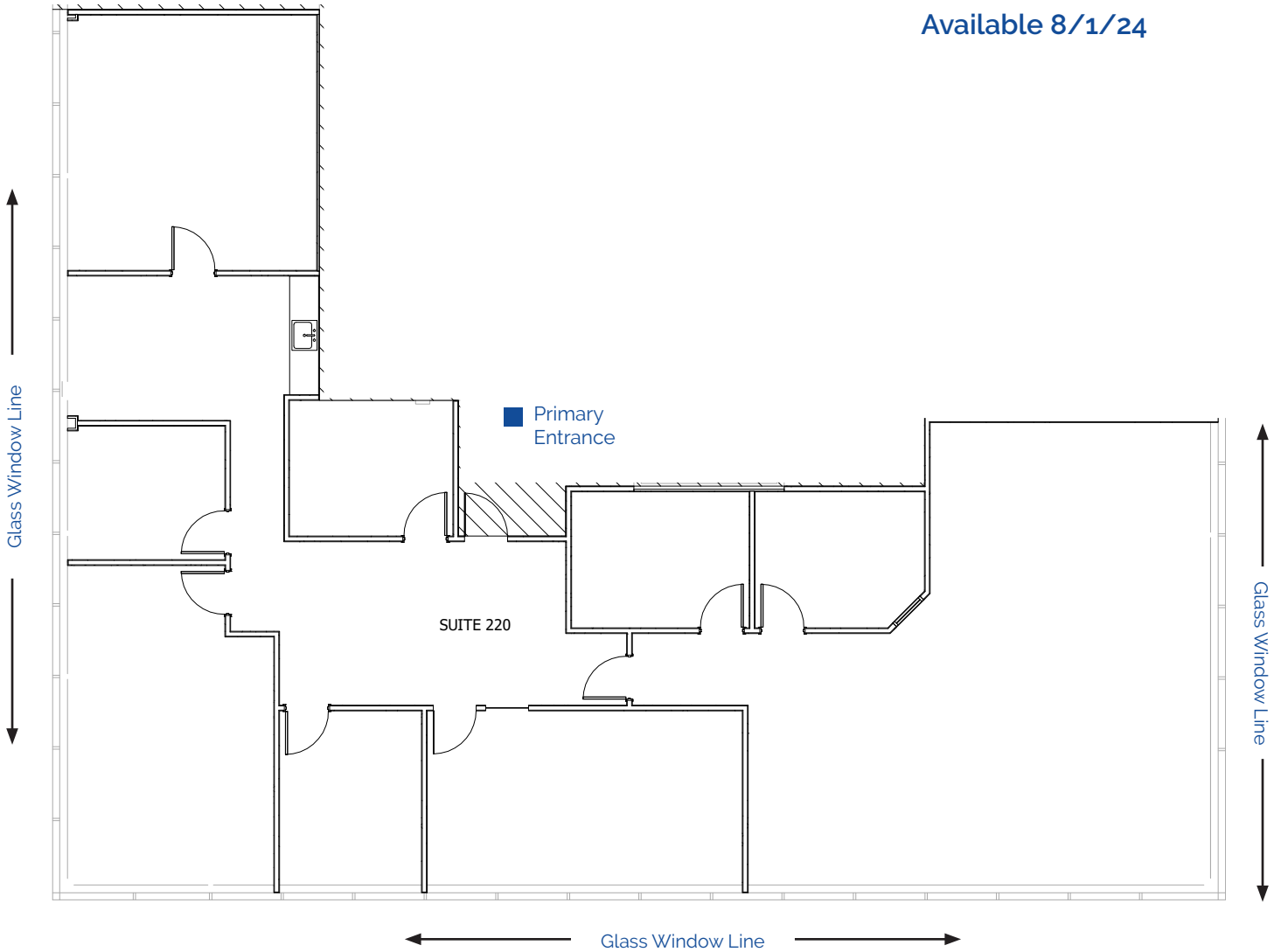
www.trpcre.com

2nd
Floor

Suite 220: 3,425 RSF

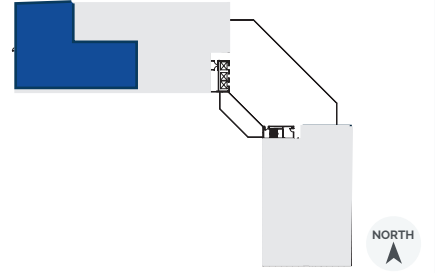


Available 8/1/24



4th Floor

Suite 400: 9,969 RSF



Available 2/1/25

