

# OFFICE SPACE FOR LEASE



**901**

901 N. Lake Destiny Drive  
Maitland, FL 32751

901 @ Maitland Center is a multi-story office building located in the Maitland Center Office Park. **New lobby transformations have been made. Recent renovations to the common areas and restrooms have been completed. New building and tenant signage have been installed.**

The easily accessible building sits along I-4, within Orlando's largest suburban office market and is close to Downtown Orlando.

[Lobby Virtual Tour: Click Here](#)

## NEW BUILDING FEATURE

Tower has enhanced common area cleanings and put in place CDC recommended precautions to create a healthier building environment. All air filters have been upgraded to MERV – 9 rating or better.

**RSF AVAILABLE  
1,295 - 11,159**

***5% Co-Broker Commission***



For more information, contact:

**Mike Caridi, CCIM**

(407) 659.0120 x101 | MCaridi@trpcrc.com

[www.trpcrc.com](http://www.trpcrc.com)

## SPACE AVAILABLE 5% CO-BROKER COMMISSION

Suite	RSF
101	2,178
103	1,894
151	3,501
195	1,576
225	11,040
300	1,295
310	11,159 <a href="#">Virtual Tour</a>



Rents from \$23.00/RSF - Full Service  
Virtual Tour: Click Suite RSF

## BUILDING FEATURES & AMENITIES

- ▶ **New Lobby Transformation**
- ▶ **New Building & Tenant Signage-Installed**
- ▶ Renovated Common Areas & Restrooms
- ▶ Highly Visible I-4 Pylon Signage
- ▶ Fitness Center & Building Cafe
- ▶ **Recently Installed: Elevator Cab Air Purification System**
- ▶ New Building Feature: Advanced and Targeted Cleanings of Common Area Spaces + MERV – 9 Air Filters
- ▶ After-Hours Security
- ▶ Covered Loading Dock + Leveler



For more information, contact:

**Mike Caridi, CCIM**

(407) 659.0120 x101 | MCaridi@trpcrc.com

[www.trpcrc.com](http://www.trpcrc.com)



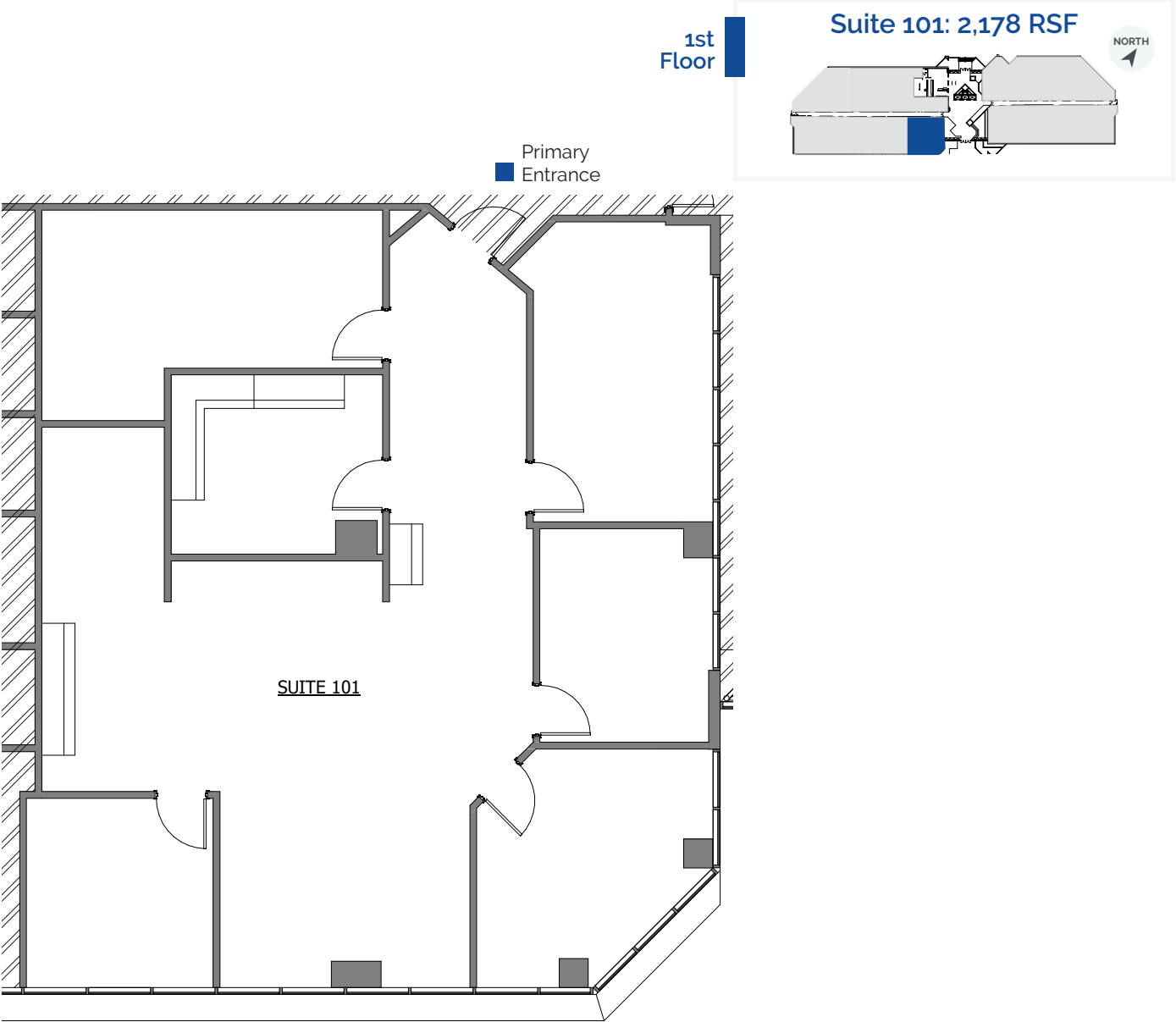


For more information, contact:

**Mike Caridi, CCIM**

(407) 659.0120 x101 | MCaridi@trpcrc.com

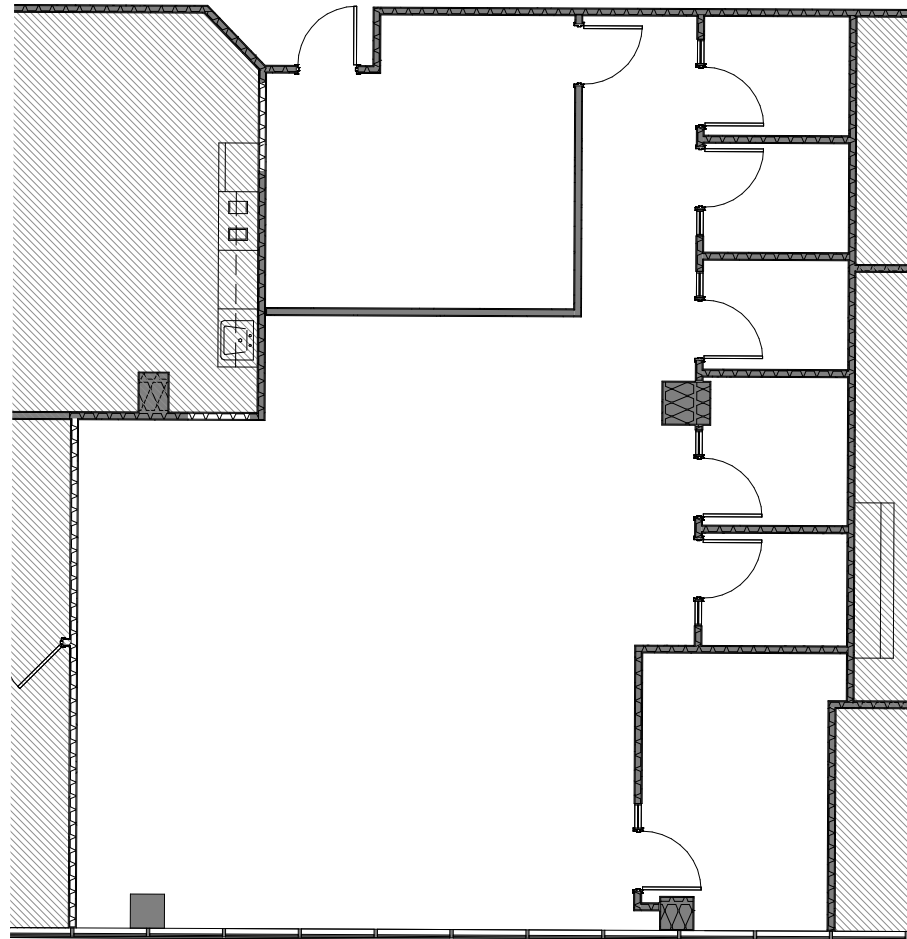
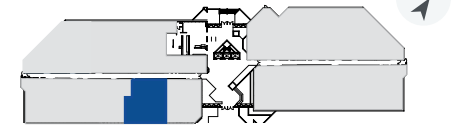
[www.trpcrc.com](http://www.trpcrc.com)





1st  
Floor

Suite 103: 1,894RSF



For more information, contact:

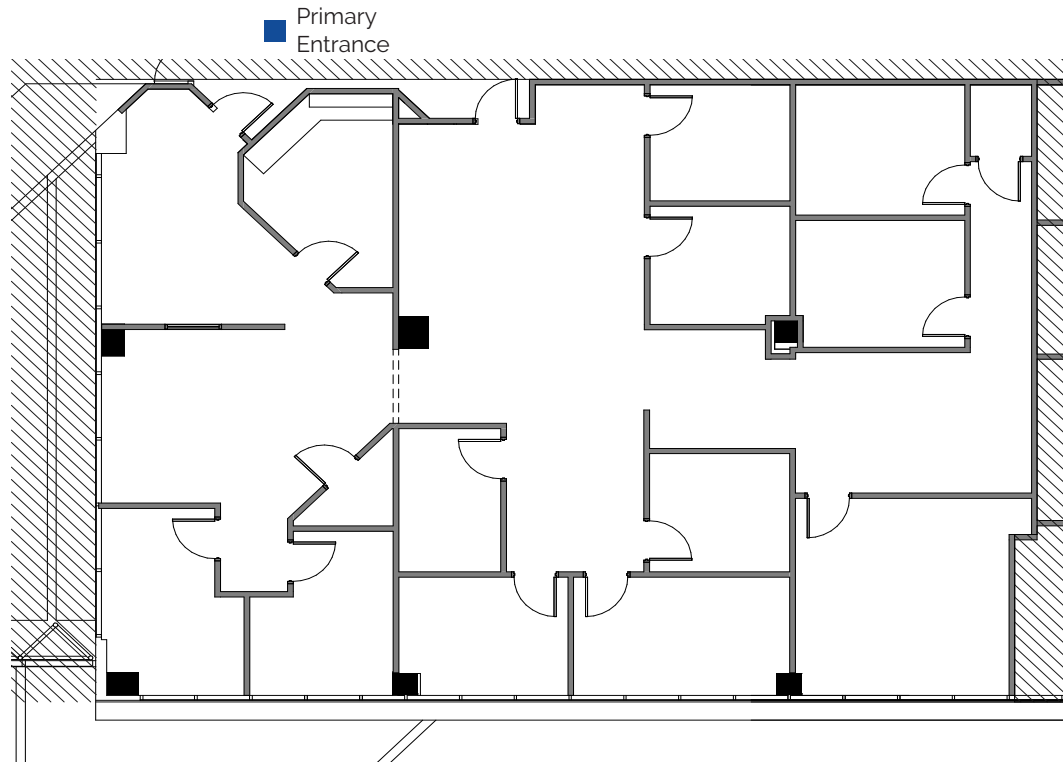
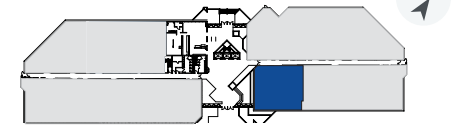
**Mike Caridi, CCIM**

(407) 659.0120 x101 | MCaridi@trpcpre.com

[www.trpcpre.com](http://www.trpcpre.com)

1st  
Floor

Suite 151: 3,501 RSF



For more information, contact:

**Mike Caridi, CCIM**

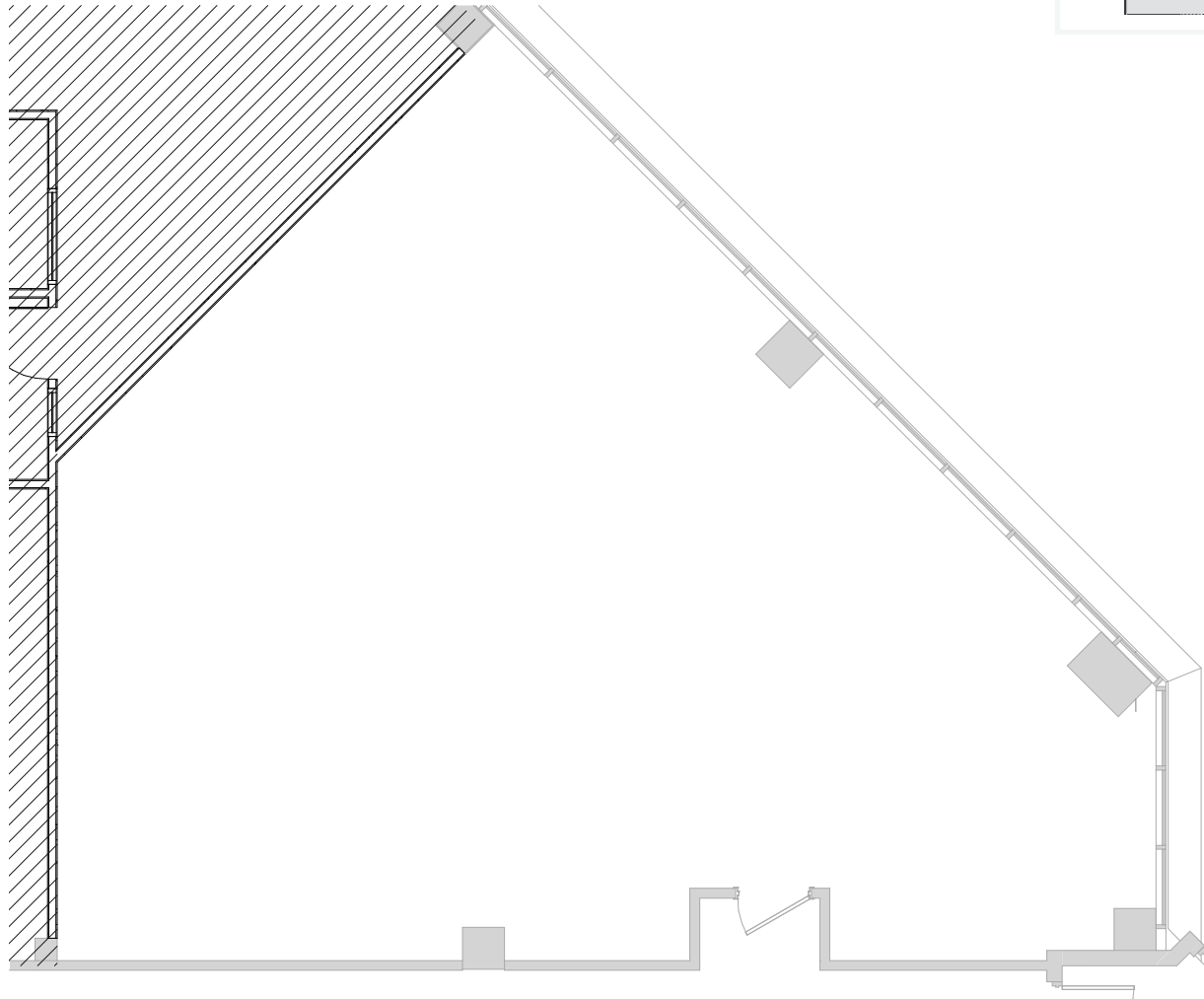
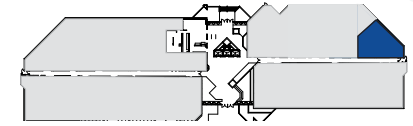
(407) 659.0120 x101 | MCaridi@trpcpre.com

[www.trpcpre.com](http://www.trpcpre.com)



1st  
Floor

Suite 195: 1,576 RSF

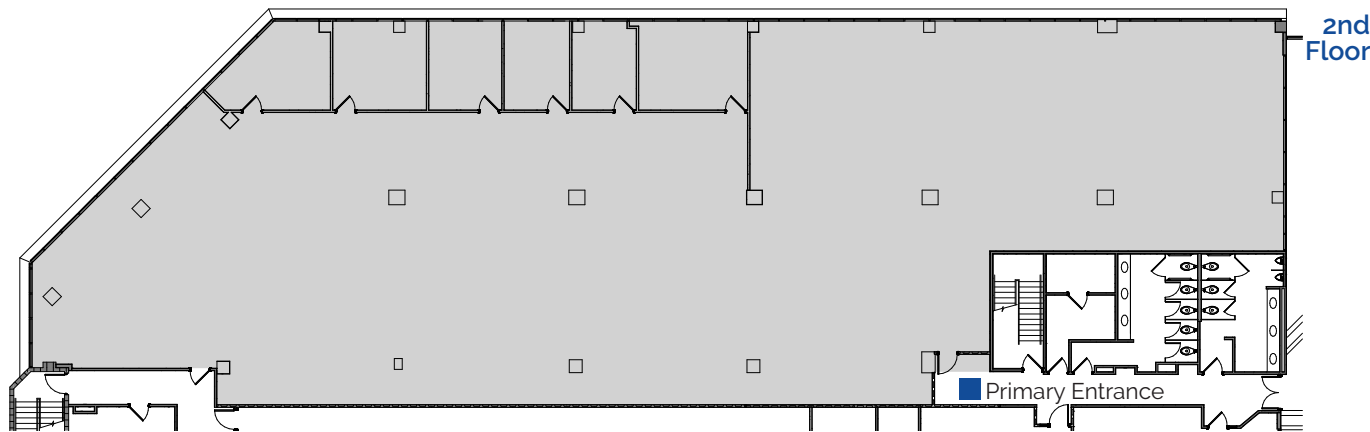


For more information, contact:

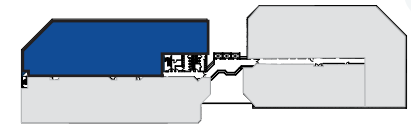
**Mike Caridi, CCIM**

(407) 659.0120 x101 | MCaridi@trpcpre.com

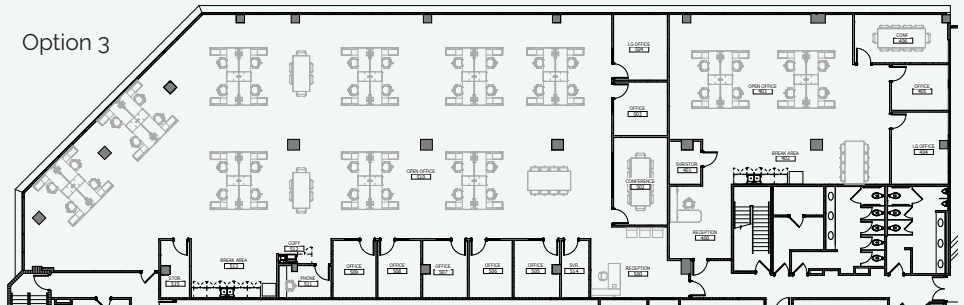
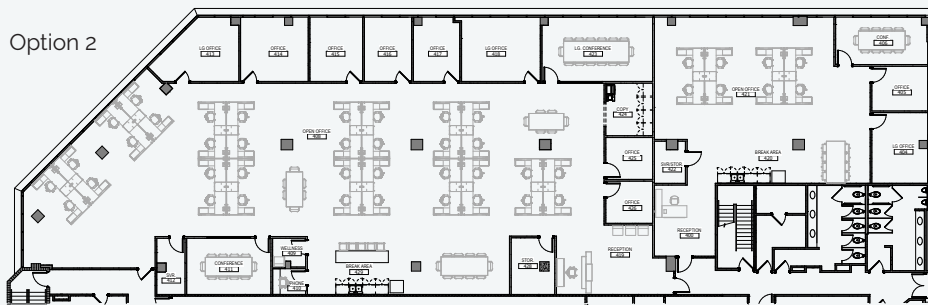
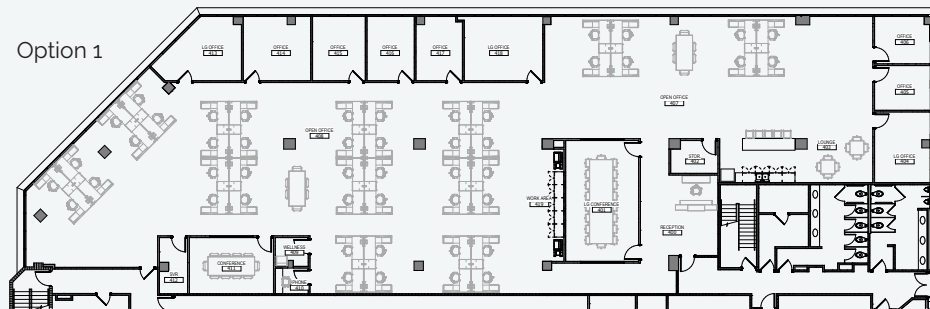
[www.trpcpre.com](http://www.trpcpre.com)



Suite 225: 11,040 RSF



## Space Plan Options



For more information, contact:

**Mike Caridi, CCIM**

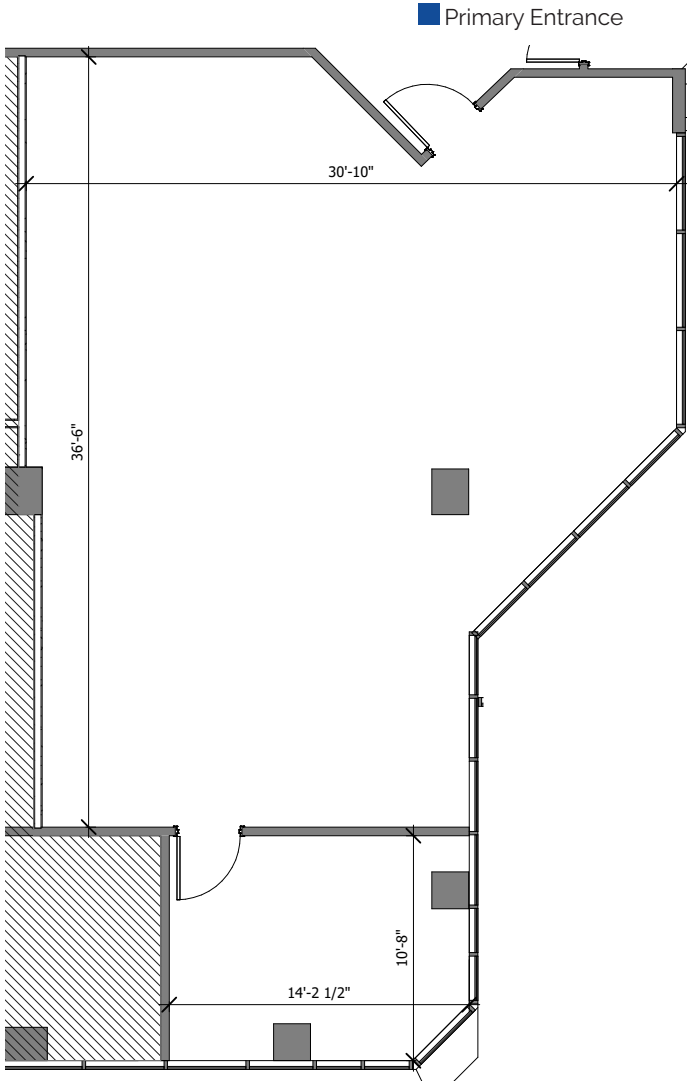
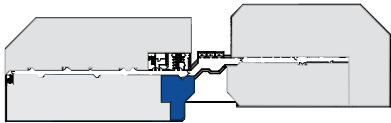
(407) 659.0120 x101 | MCaridi@trpcpre.com

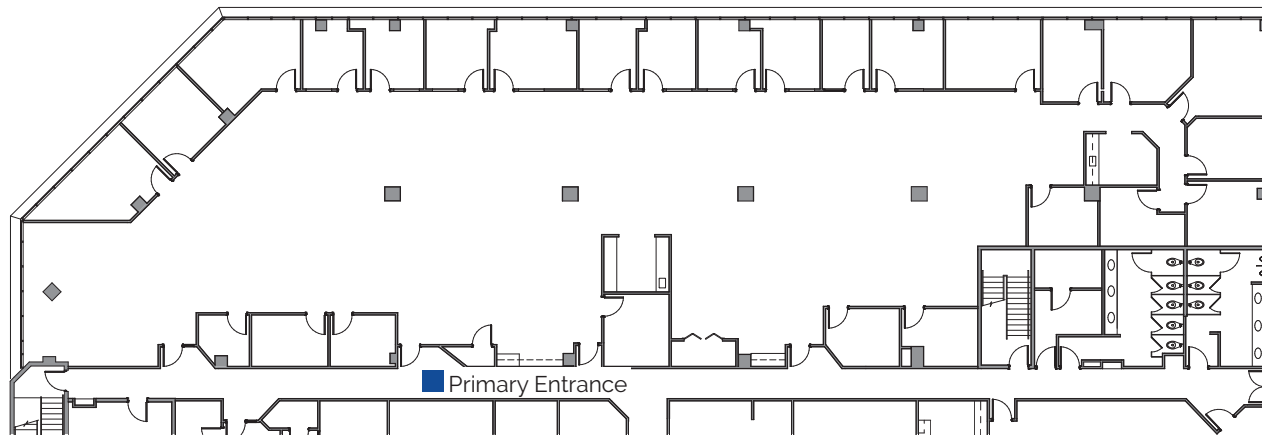
[www.trpcpre.com](http://www.trpcpre.com)



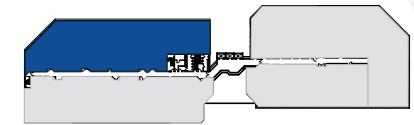
3rd  
Floor

Suite 300: 1,295 RSF



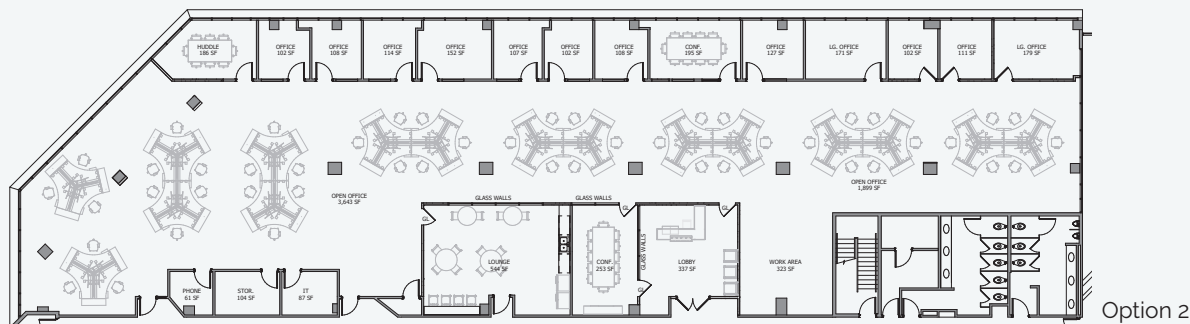
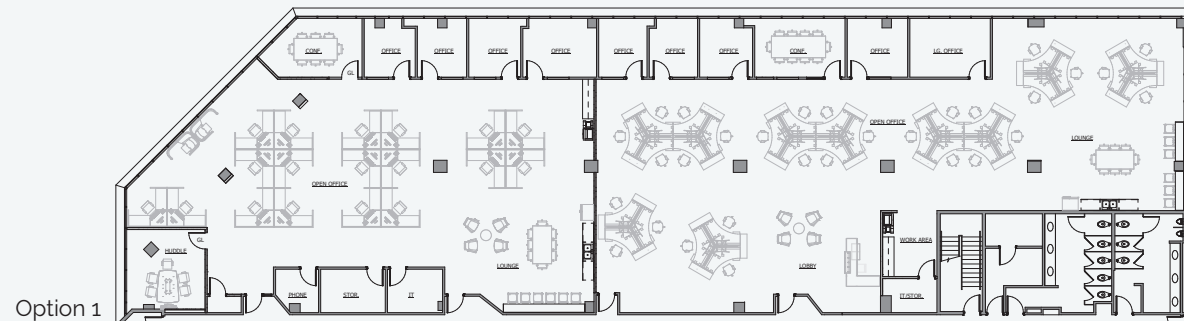


Suite 310: 11,159 RSF



[Virtual Tour](#)

## Space Plan Option



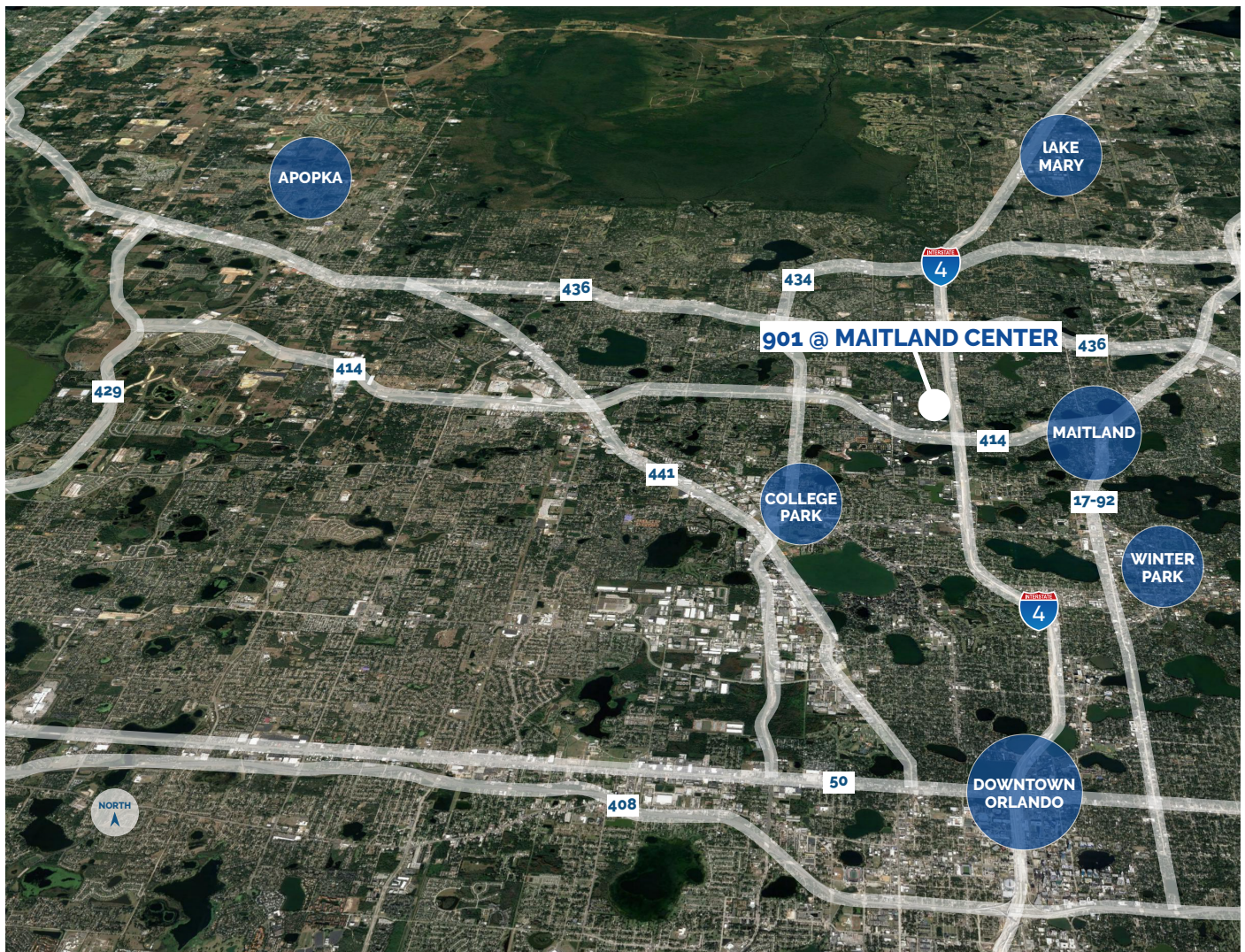
For more information, contact:

**Mike Caridi, CCIM**

(407) 659.0120 x101 | MCaridi@trpcpre.com

[www.trpcpre.com](http://www.trpcpre.com)





## LOCATION HIGHLIGHTS

- ▶ Well-positioned within Maitland Center Office Park, one of Orlando's largest office submarkets
- ▶ Conveniently less than a half mile from I-4 & providing easy access to Downtown Orlando
- ▶ Close to business hotels, restaurants, retail and the RDV Sportsplex
- ▶ Ideally located near Central Florida's top executive housing market & the following established neighborhoods:
  - Maitland: 3-Miles
  - Winter Park: 5-Miles
  - College Park: 7-Miles
  - Downtown: 8-Miles
  - Lake Mary: 12-Miles

For more information, contact:

**Mike Caridi, CCIM**

(407) 659.0120 x101 | MCaridi@trpcpre.com

[www.trpcpre.com](http://www.trpcpre.com)