

OFFICE SPACE FOR LEASE



MAITLAND 100

2300 Maitland Center Parkway
Maitland, FL 32751

Maitland 100 is a multi-story office building with on-site amenities including a state-of-the-art fitness center and a cafe. The building was recently renovated with upgrades to its lobby, corridors & restrooms.

For a virtual tour of the lobby, [click here.](#)

NEW BUILDING FEATURE

Tower has enhanced common area cleanings and put in place CDC recommended precautions to create a healthier building environment. All air filters have been upgraded to MERV – 9 rating or better.

**5% CO-BROKER
COMMISSION**



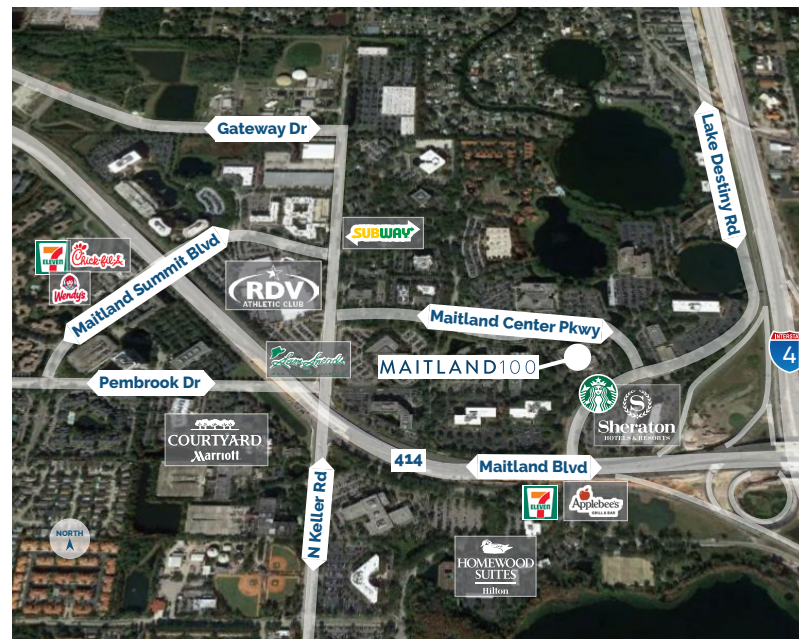
For more information, contact:

Tiffany Zullo
(407) 659.0120 x114 | TZullo@trpcre.com

www.trpcre.com

SPACE AVAILABLE

Suite	RSF
308	5,115
5% BROKER COMMISSION	



BUILDING FEATURES & AMENITIES

- ▶ **New Building Feature: Advanced and Targeted Cleanings of Common Area Spaces + MERV – 9 Air Filters**
- ▶ Renovated Lobby, Corridor & Restrooms
- ▶ Telcom (Cable/Fiber): Spectrum, Century Link, Crown Castle
- ▶ State-of-the-Art Fitness Center + Showers
- ▶ On-Site Restaurant: Greenhouse Cafe
- ▶ Adjacent to Starbucks in the Sheraton Hotel Links Cafe
- ▶ Building & Monument Signage Available



For more information, contact:

Tiffany Zullo

(407) 659.0120 x114 | TZullo@trpcre.com

www.trpcre.com

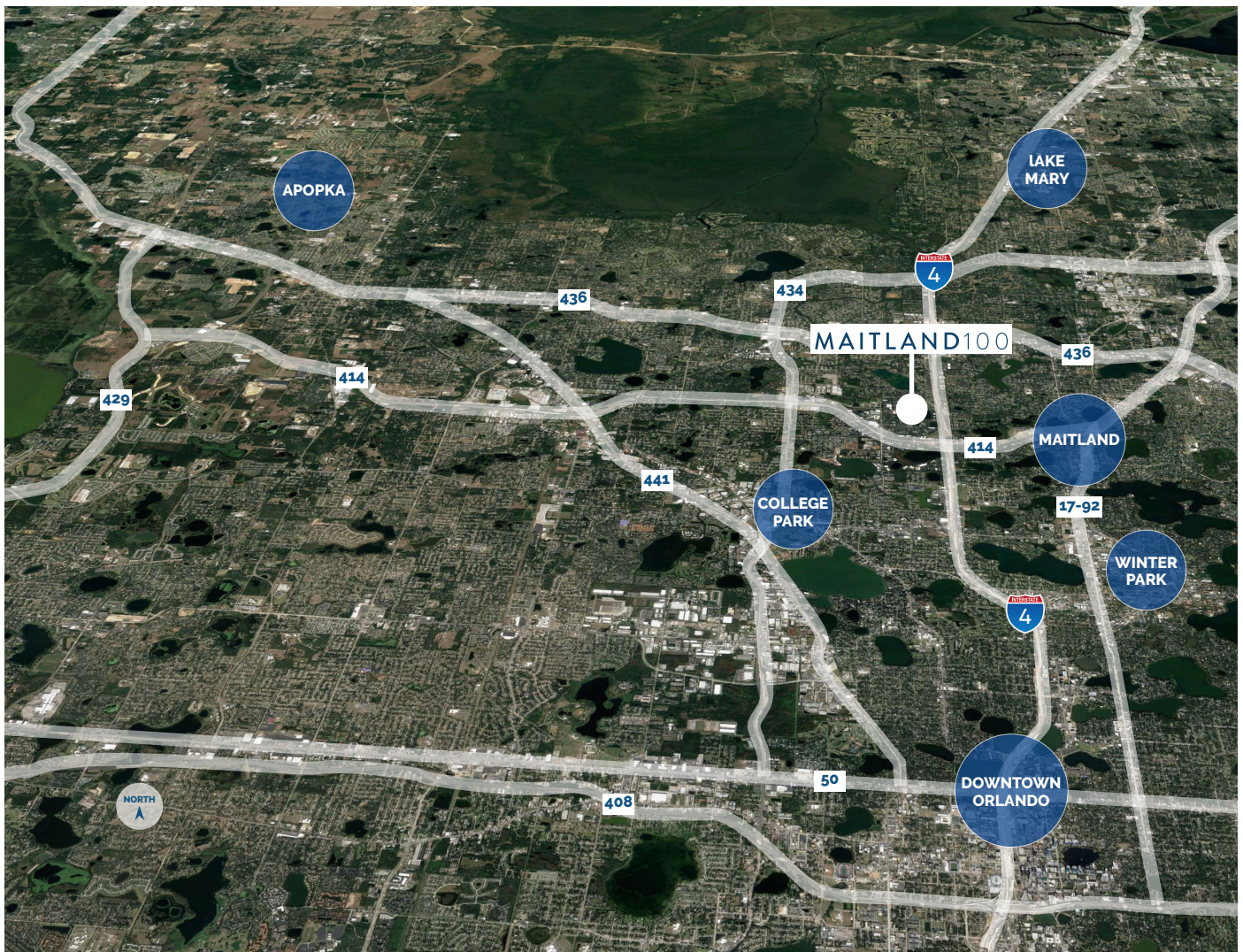


NEWLY RENOVATED
Lobby, Corridors & Restrooms



For more information, contact:
Tiffany Zullo
(407) 659.0120 x114 | TZullo@trpre.com

www.trpre.com



LOCATION HIGHLIGHTS

- ▶ Well-positioned within Maitland Center Office Park, one of Orlando's largest office submarkets
- ▶ Conveniently less than a half mile from I-4 & providing easy access to Downtown Orlando
- ▶ Close to business hotels, restaurants, retail and the RDV Sportsplex
- ▶ Ideally located in Central Florida's top executive housing market & the following established neighborhoods
 - Maitland: 3-Miles
 - Winter Park: 5-Miles
 - College Park: 7-Miles
 - Downtown: 8-Miles
 - Lake Mary: 12-Miles

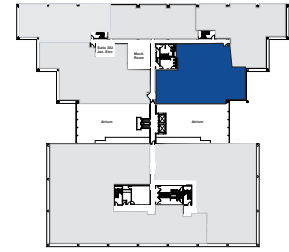
For more information, contact:

Tiffany Zullo
 (407) 659.0120 x114 | TZullo@trpcre.com

www.trpcre.com

3rd Floor

Suite 308: 5,115 RSF



*Space Includes A Professional Grade Kitchen

