

OFFICE SPACE FOR LEASE



MAITLAND GREEN I

601 S. Lake Destiny Road
Maitland, FL 32751

Maitland Green I is a 4-story Class A office building with approximately 111,000 RSF and available space ranging from 2,019 - 14,382 RSF.

Located in the highly desirable Maitland Center Office Park, this corporate building provides efficient office suites for all professional businesses.

For a virtual tour, [click here](#).

NEW BUILDING FEATURE

Tower has engaged BioAway to professionally disinfect all common areas on a frequent basis as outlined by the CDC and per OSHA standards using PPE. In addition, all air filters have been upgraded to MERV – 9 rating or better (where applicable) as well as maximizing the fresh air intake from our building systems to create a healthier building environment.



For more information, contact:

ShIPLEY Hall
(407) 659.0120 x111 | SHall@TowerRealtyPartners.com

TowerRealtyPartners.com

SPACE AVAILABLE

Suite	RSF
150*	4,343
180	2,019
200	14,382 Avail. 10/1/2021
225	2,979 Avail. 10/1/2021
325 + 360	6,579
325	4,369
360	2,210

***Reduced Rate on Suite 150**



BUILDING FEATURES & AMENITIES

- ▶ 111,000 RSF Class A 4-Story Building
- ▶ On-Site Institutional Property Management
- ▶ 4/1000 Parking Ratio
- ▶ On-Site Building Cafe
- ▶ **New Building Feature: BioAway Professional Disinfection Service + MERV – 9 Air Filters**
- ▶ Large Centrally Located Courtyard for Collaborative Distancing Area

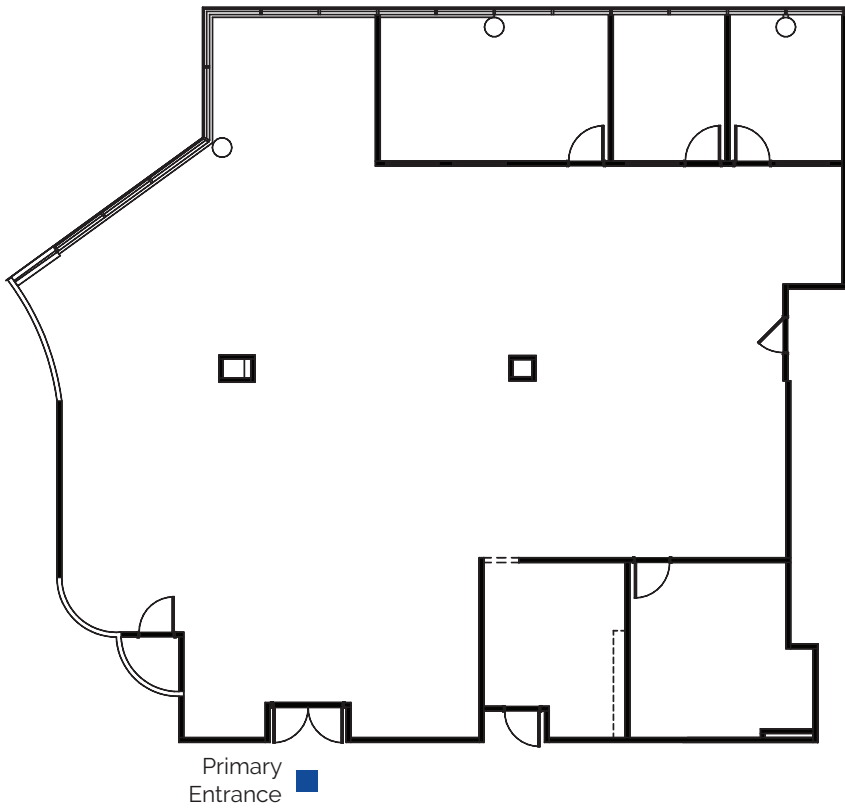


For more information, contact:

Shiple Hall

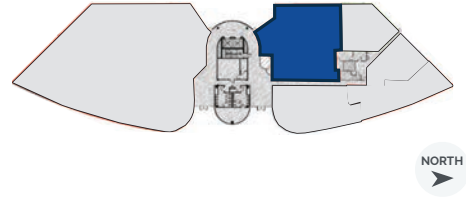
(407) 659.0120 x111 | SHall@TowerRealtyPartners.com

TowerRealtyPartners.com

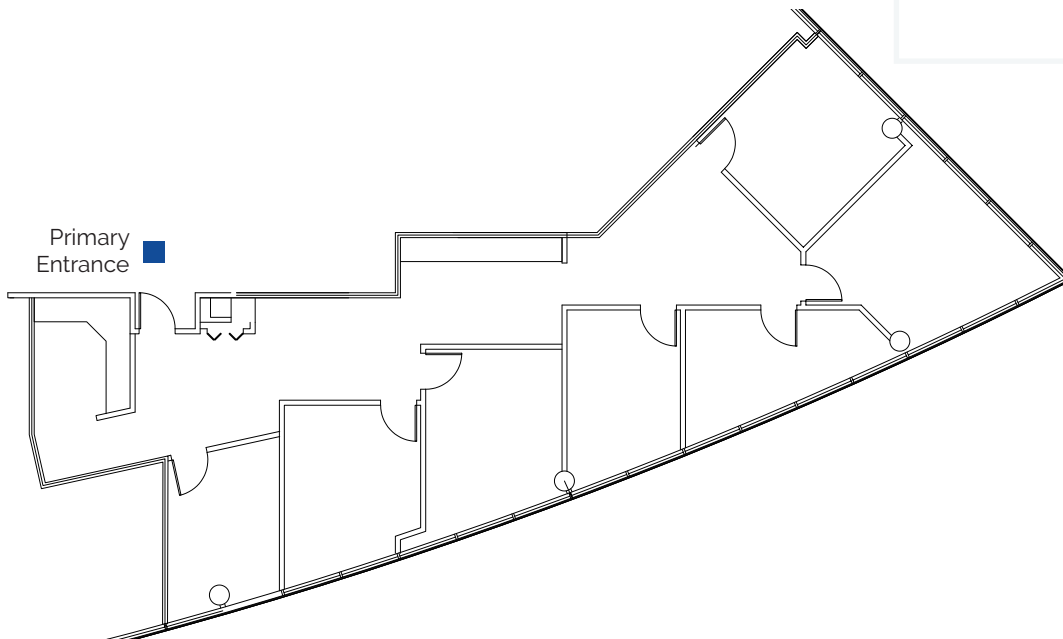


1st Floor

Suite 150: 4,343 RSF

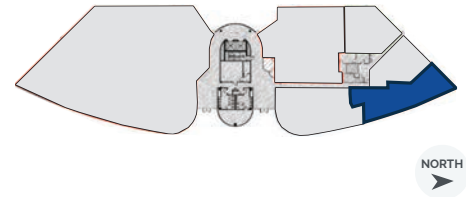


Reduced Rate Now Available



1st Floor

Suite 180: 2,019 RSF



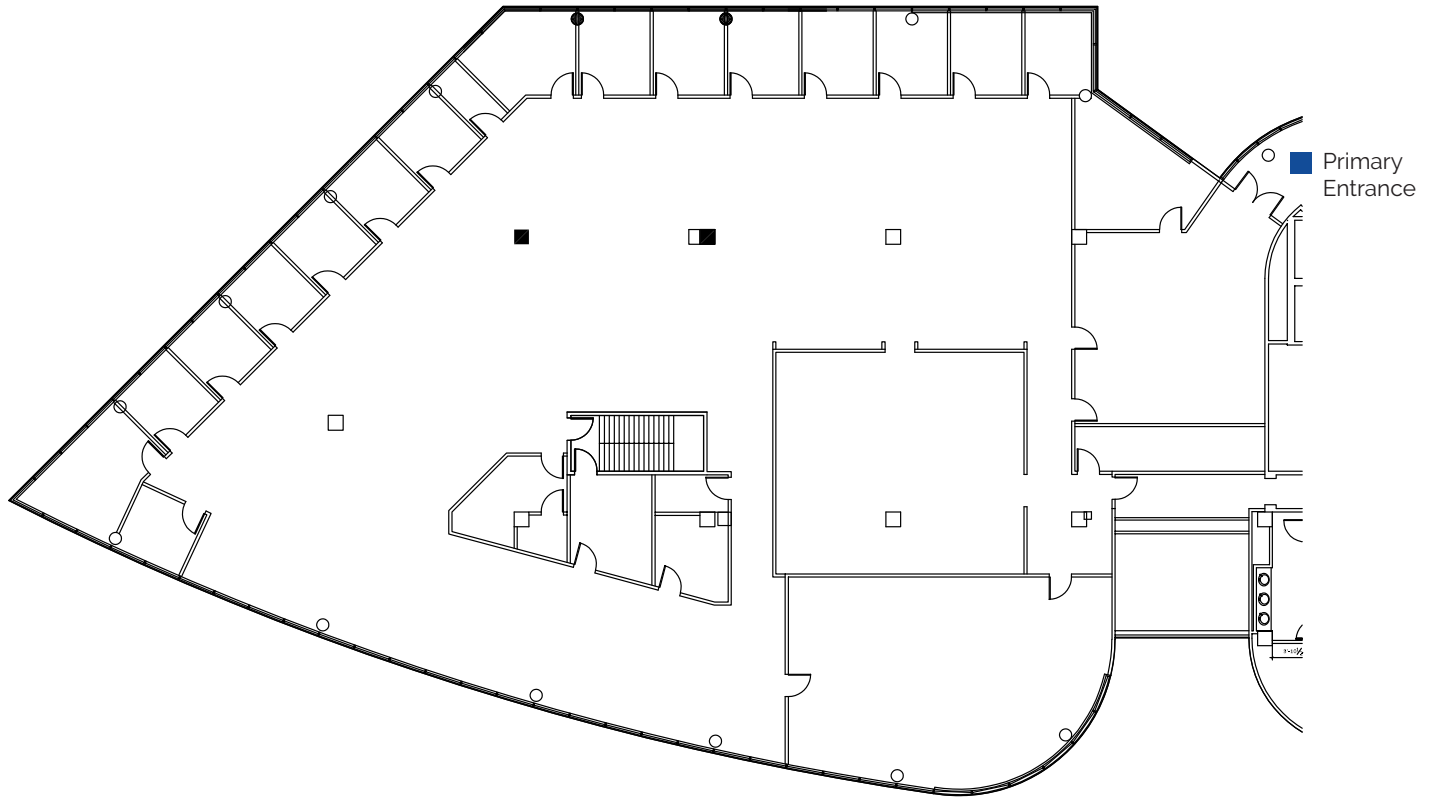
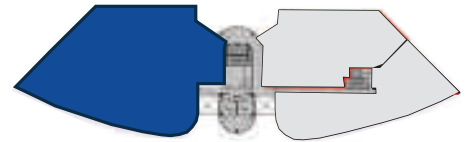
For more information, contact:

ShIPLEY Hall
(407) 659.0120 x111 | SHall@TowerRealtyPartners.com

TowerRealtyPartners.com

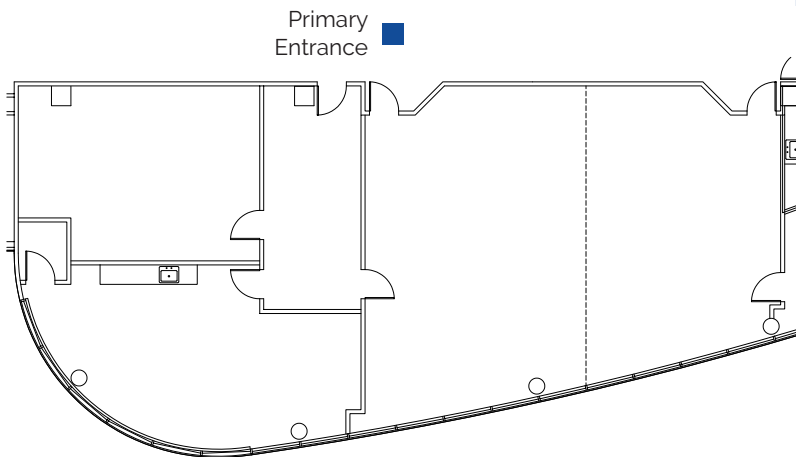
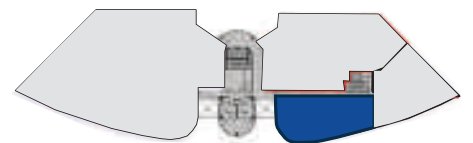
2nd
Floor

Suite 200: 14,382 RSF



2nd
Floor

Suite 225: 2,979 RSF



For more information, contact:

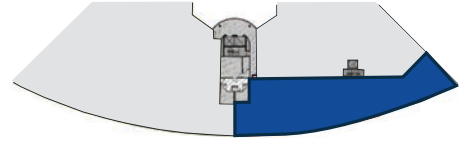
ShIPLEY Hall

(407) 659.0120 x111 | SHall@TowerRealtyPartners.com

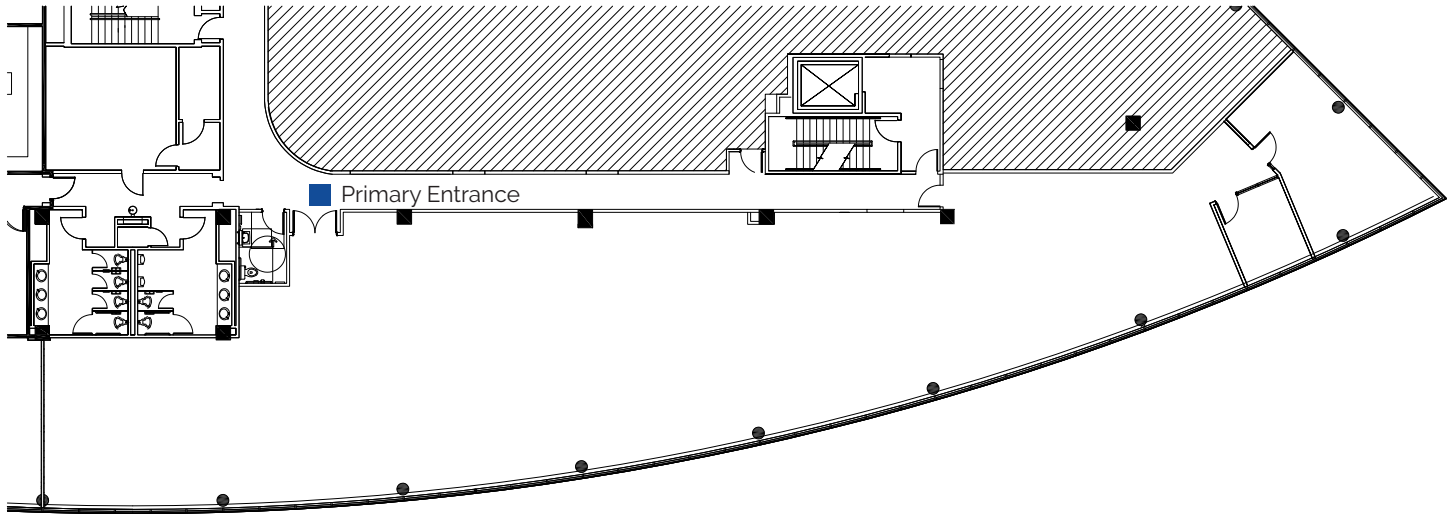
TowerRealtyPartners.com

3rd Floor

Suite 325 + 360: 6,579 RSF

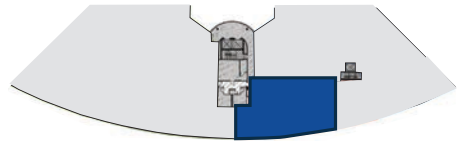


NORTH

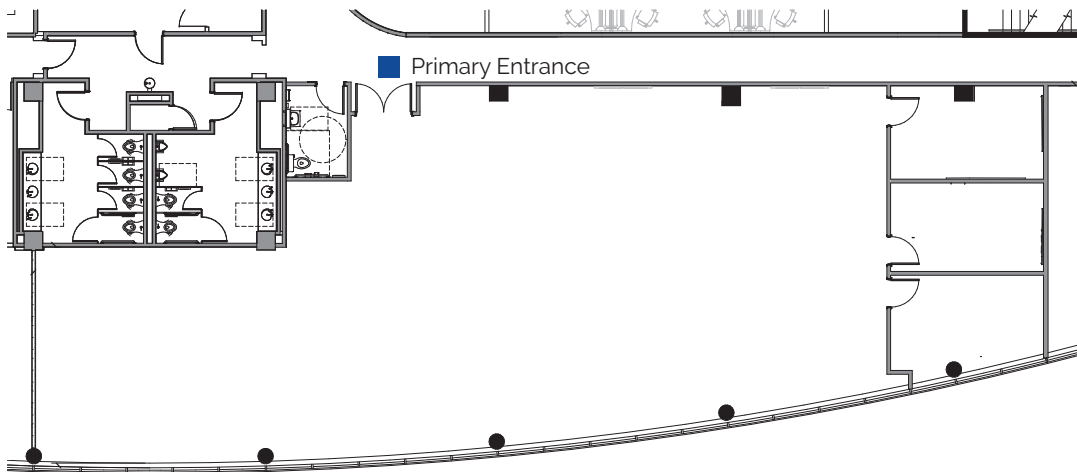


3rd Floor

Suite 325: 4,369 RSF



NORTH

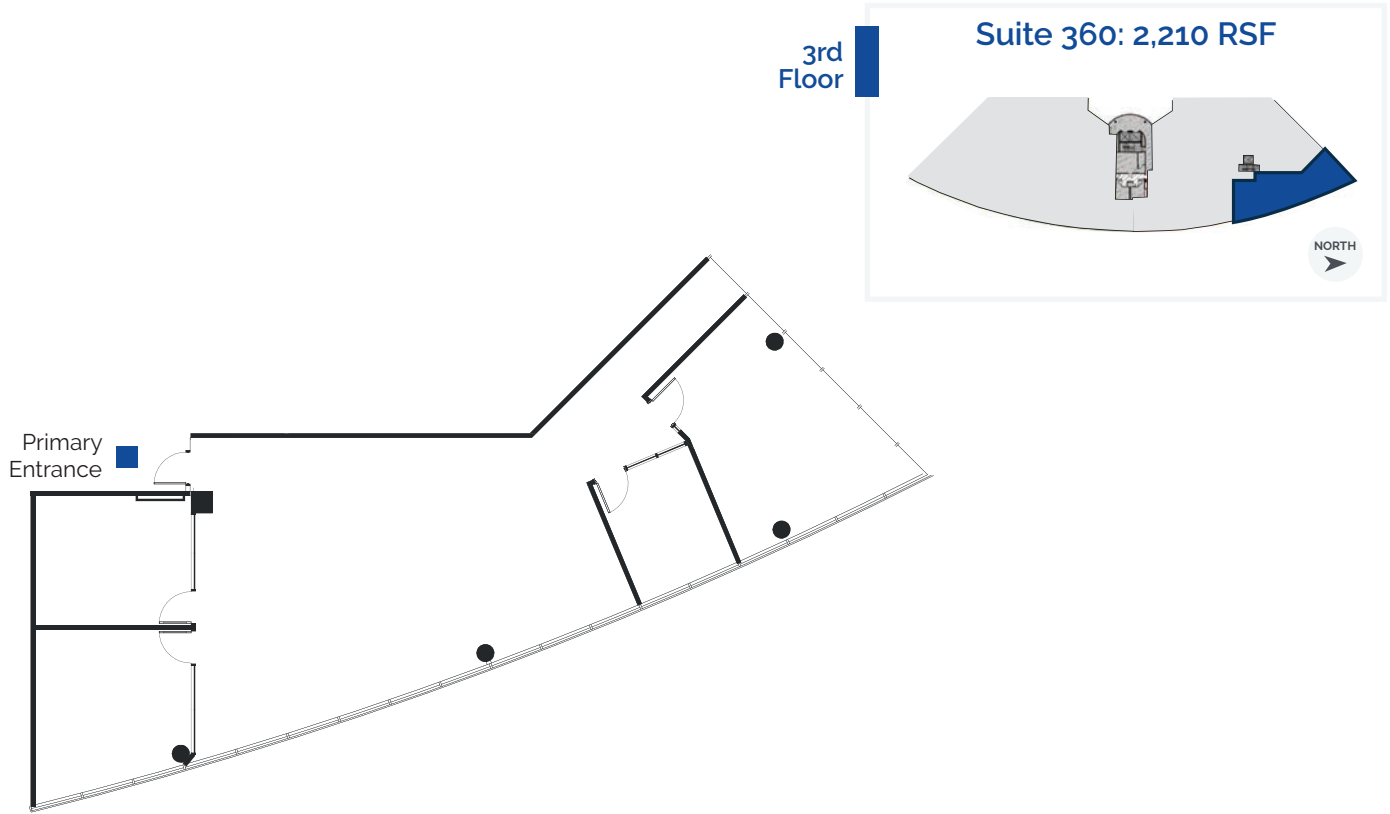


For more information, contact:

ShIPLEY Hall

(407) 659.0120 x111 | SHall@TowerRealtyPartners.com

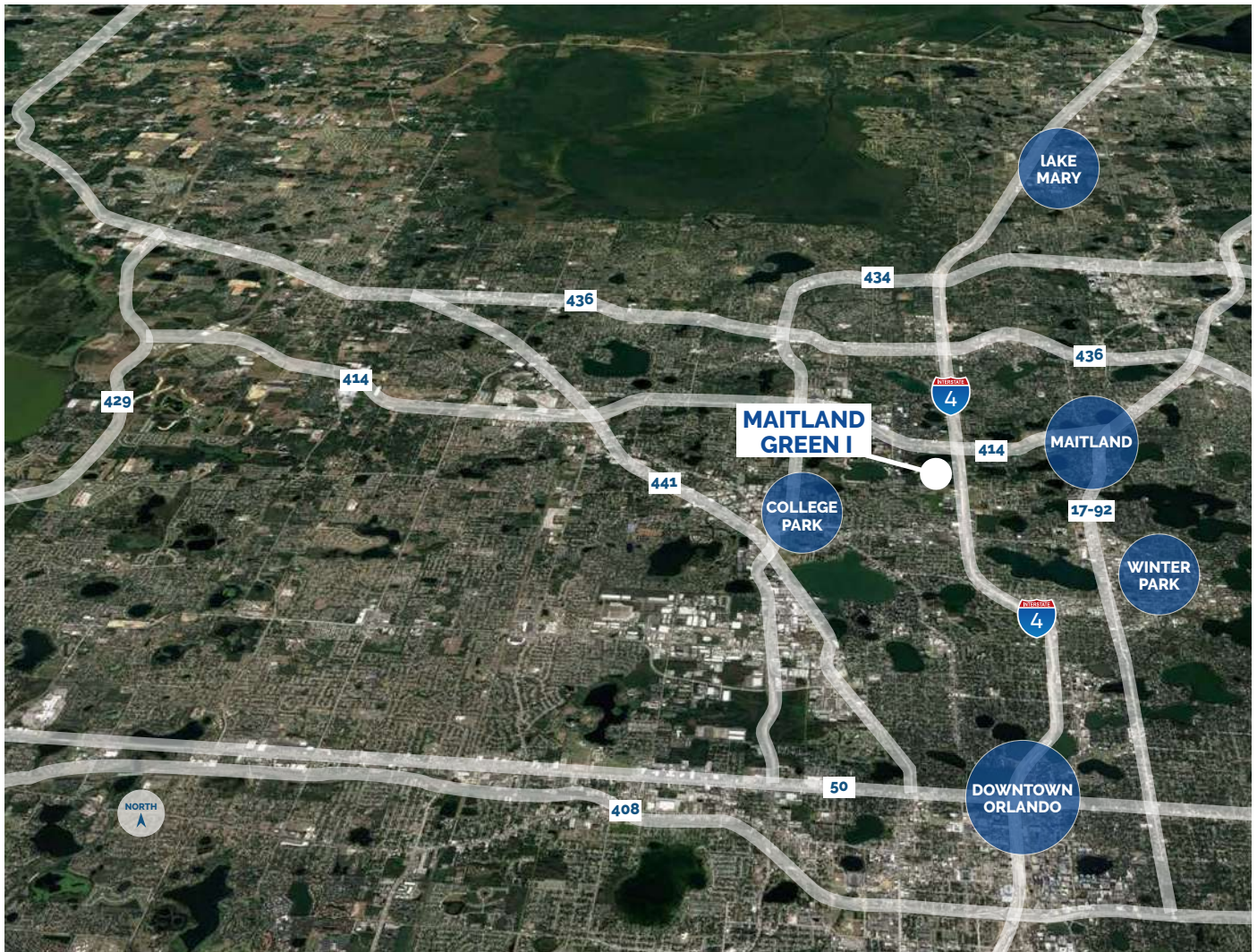
TowerRealtyPartners.com



For more information, contact:

ShIPLEY Hall
(407) 659.0120 x111 | SHall@TowerRealtyPartners.com

TowerRealtyPartners.com



LOCATION HIGHLIGHTS

- ▶ Well-positioned within Maitland Center Office Park, one of Orlando's largest office submarkets
- ▶ Conveniently less than a half mile from I-4 & providing easy access to Downtown Orlando
- ▶ Close to business hotels, restaurants, retail and the RDV Sportsplex
- ▶ Ideally located in Central Florida's top executive housing market & the following established neighborhoods
 - Maitland: 3-Miles
 - Winter Park: 5-Miles
 - College Park: 7-Miles
 - Downtown: 8-Miles
 - Lake Mary: 12-Miles

For more information, contact:

Shiple Hall
 (407) 659.0120 x111 | SHall@TowerRealtyPartners.com

TowerRealtyPartners.com